

PS&C



1968 - 1969



WARREN E. HEARNES

GOVERNOR

Missouri Public Service Commission



Area Code 314
636-3111

JEFFERSON CITY
MISSOURI 65101

January 9, 1970

Commissioners:

WILLIAM R. CLARK

Chairman

CHARLES J. FAIN

MARVIN E. JONES

HOWARD ELLIOTT, JR.

WILLARD C. REINE

SAM L. MANLEY

Secretary

TO: The Honorable Warren E. Hearnes, Governor

and

The General Assembly of the State of Missouri

On behalf of the Missouri Public Service Commission, I submit to you its annual report for the fiscal year, July 1, 1968, through June 30, 1969.

This report contains a summary of the function of each office of the Commission and a list of the cases considered by the Commission during the fiscal year.

The number of public utility and transportation matters brought before the Commission was greater than in previous years, and was accompanied by an uncommon volume of public utility rate increase requests.

In a typical year the Commission may be asked to consider two or three utility rate increase requests, which require considerable time and effort. During the fiscal year of this report, 25 such cases were before the Commission.

The same expansion in work load has been experienced during the past year by regulatory agencies in other states and at the federal level.

The Missouri Public Service Commission decided nine of the 25 rate increase cases during the fiscal year, and seven cases have been decided since the end of the fiscal year. In 10 of those 16 cases, the rates determined by the Commission were lower than those requested.

Consumers accustomed to stable utility bills have expressed concern over these rate increases.

The rate increases granted were needed to facilitate continual growth and the provision of service under changing cost conditions.

Over the span of the past 10 years, Missouri public utilities have exhibited significant growth. For example, electric utilities in Missouri had plant in service totaling \$2 billion by the end of 1968. Similarly, by the end of 1968, the Missouri telephone industry's plant in service totaled \$1.2 billion.

The stability in utility rates customers had come to expect was due to two factors: technological innovations and population growth that offset less extreme increases in the price level. As the decade ended, however, utilities confronted with accelerated inflation experienced a reduction in net revenues as those two factors no longer offset rising costs.


An indication of the overheated nature of the economy was the increase in the prime interest rate--the rate charged large borrowers by lending institutions--which climbed from 5 per cent in 1965 to the present level of 8.5 per cent.

Utilities no longer able to cope with the rising costs of capital, labor and materials requested relief through increased rates.

In these rate cases, the Commission assures a balance of consumer and utility interest by carefully analyzing all available data prior to making a decision.

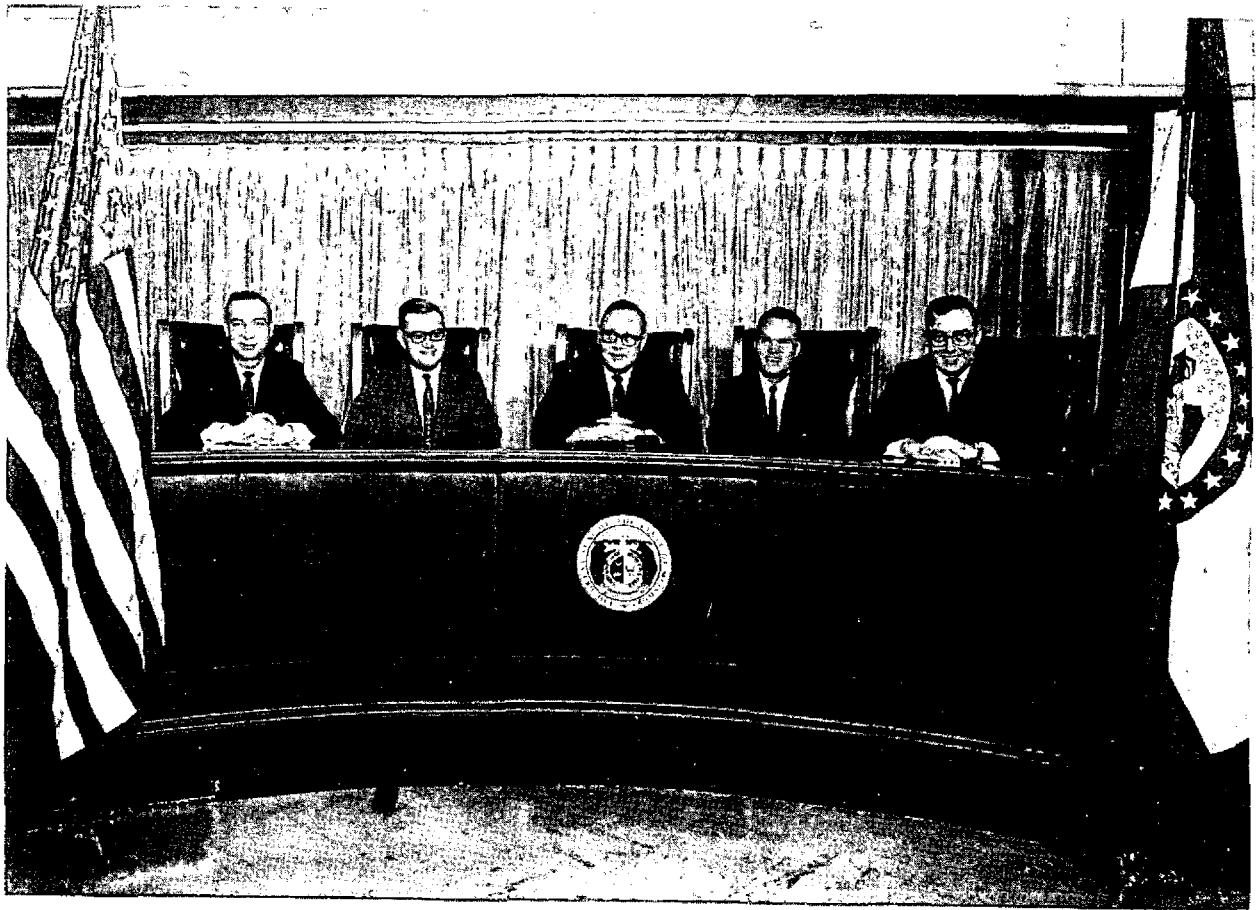
In the years ahead, the Commission will continue to exercise its authority to the maximum benefit of all Missourians.

Respectfully submitted,


William R. Clark
Chairman

INDEX

The Commission	1
Office of the Secretary	11
Office of the General Counsel	15
Office of Transportation	19
Office of Utilities	27
Cases, 1968-1969	
Bus & Truck	47
Railroad	61
Railroad Safety.	65
Public Utilities.	71



THE COMMISSION



THE CHAIRMAN



WILLIAM R. CLARK

Chairman William R. Clark, a Democrat, was the first member of the Public Service Commission appointed by Governor Warren E. Hearnes, taking office July 1, 1965.

Chairman Clark, a member of the National Association of Regulatory Utility Commissioners, serves on its Executive Committee and its committees on Communications, Coordination of Congressional Activities and State Use of Interim Separations Procedures.

He is Chairman of the Governor's Railroad-Highway Grade Crossing Safety Committee and the Transportation Task Group of the Missouri Emergency Resources Management Planning Board.

Chairman Clark also serves on the Missouri Highway Reciprocity Commission, the Missouri Oil and Gas Council and the Governor's Coordinated Committee on Traffic Safety.

Prior to his appointment to the PSC, the Chairman was engaged in the general practice of law in Columbia. He had served as Corporation Counsel under the late Secretary of State Walter H. Toberman. He is a Colonel on Governor Hearnes' staff.

Chairman Clark is a graduate of the University of Missouri schools of Law and Business and Public Administration, and Kemper Military Academy.

He was a U. S. Air Force combat pilot in World War II, and earned the Distinguished Flying Cross and the Air Medal with Oak Leaf Cluster. He retired from the Air Force Reserve in 1967 with the rank of lieutenant colonel after 25 years' service.

Chairman Clark was born March 27, 1921, and was reared in Windsor, Missouri.



MARVIN E. JONES
Vice-Chairman

Vice-Chairman Marvin E. Jones was appointed to the Public Service Commission by Governor Warren E. Hearnes on April 15, 1967.

Before joining the Commission, Vice-Chairman Jones was engaged in the private practice of law in Dexter with the firm of Powell, Jones and Ringer. He earlier was manager of the District Claims Office at Dexter for MFA Insurance Co., supervising claim adjustments in Southeast Missouri.

Vice-Chairman Jones is a member of the Executive Board and is Second Vice President of the Midwest Association of Railroad and Utilities Commissioners.

He is a past president of the Stoddard County Bar Association, and was a member of the Board of Deacons of the First Baptist Church of Dexter. He is a Democrat and is a Colonel on the staff of Governor Hearnes.

The Vice-Chairman was born June 8, 1921, in Bernie, and attended Southeast Missouri State College and the University of Missouri School of Business and Public Administration. He received his LL. B. degree from the University of Missouri School of Law.

During World War II, he served as a bomber navigator with the 15th Air Force, winning the Air Medal with four oak leaf clusters and the Purple Heart with two oak leaf clusters for his combat service in Italy.



CHARLES J. FAIN

Commissioner

Commissioner Charles J. Fain was appointed to the Public Service Commission on October 1, 1965, by Governor Warren E. Hearnes.

He was a partner in the firm of Fain and Rea, Attorneys at Law, Branson, engaged in general practice before his appointment to the Commission.

Commissioner Fain, a Republican, served two terms in the Missouri General Assembly as a Representative from Taney County, and was Speaker Pro Tem during his second term. He was the author of the legislation creating Missouri's first Little Hoover Commission and later served with that group.

He serves as a NARUC Cooperator with federal regulatory agencies. He also is a member of Secretary of Transportation Volpe's Task Force on Railroad Safety. He served two terms as City Attorney for Branson and is a former president of the Branson Chamber of Commerce. He is a member of the Missouri Bar, Taney County Bar, the Bar Association of St. Louis and the American Bar Association.

He holds an LL. B. degree from the University of Missouri School of Law and a masters degree in law from George Washington University, Washington, D. C.

In World War II, Commissioner Fain was a U. S. Air Force combat navigator in the Central Pacific Theater.

He was born September 26, 1919, in Chandler, Arizona, and was reared in Branson, Missouri.



HOWARD ELLIOTT, JR.

Commissioner

Commissioner Howard Elliott, Jr., was appointed to the Public Service Commission on April 15, 1967, by Governor Warren E. Hearnes.

Prior to his appointment, Commissioner Elliott was engaged in the private practice of law in St. Louis with the firm of Boyle, Priest, Elliott & Weakley. He was active in civic and education activities, and was a member of the Committee of Forty, which established in St. Louis and St. Louis County the first junior college district in Missouri.

Commissioner Elliott is a member of the National Association of Regulatory Utility Commissioners and serves on its Committee on Electric and Nuclear Energy. He also is a member of the Midwest Association of Railroad and Utilities Commissioners, the Bar Association of St. Louis, the Cole County Bar, the Missouri Bar and the American Bar Association. He is a Republican.

He attended Brown University and is a graduate of the Washington University School of Law. He served in the U. S. Army from 1956 to 1958.

Commissioner Elliott was born July 4, 1933.



WILLARD C. REINE
Commissioner

Commissioner Willard C. Reine was reappointed to the Public Service Commission for a full term by Governor Warren E. Hearnes on April 29, 1969. He was first appointed to the Commission on April 16, 1968, to serve the remainder of the term of Commissioner Donal D. Guffey, who resigned.

Commissioner Reine previously was Chief Counsel for the Missouri Department of Revenue, and had served as Assistant Chief Counsel for the Missouri Division of Insurance.

He is a member of the Committee on Engineering, Depreciation and Valuation of the National Association of Regulatory Utility Commissioners.

From 1960 to 1965, Commissioner Reine was engaged in the general practice of law in East Prairie, and was Assistant Prosecuting Attorney for Mississippi County and City Attorney of East Prairie.

He is a past president of the State Young Democrats, and served as National Committeeman for that organization. He is a Colonel on the staff of Governor Hearnes.

Commissioner Reine, the youngest Commissioner, was born April 19, 1935. He is a graduate of Central Missouri State College and the University of Missouri School of Law.

Missouri Public Service Commission

The citizens of Missouri are assured of good transportation and utility service at reasonable prices as a result of the work of the Missouri Public Service Commission.

The Commission also must ensure that the companies it regulates stay in sound financial condition so they can provide service and offer a competitive return to investors.

When conflicts arise between consumers and companies over rates, service or other matters, the problem is brought before the Commission. The Commissioners are able to settle some cases informally. When this cannot be done, the issue is presented in a formal hearing.

In Fiscal 1968-1969, the Commission was asked to consider an unusually large number of rate increase cases, the result of inflationary pressures that drove up the costs of labor, materials and capital for the companies.

The companies requested rate increases because, with increased plant investment, their revenues were not rising as rapidly as their costs.

EFFECTS CONSIDERED

The work of the Commission affects every Missourian, and careful consideration was given to the economic effect of each case. In several instances, the amount granted by the Commission was less than that requested.

The Commission, the General Counsel who presents the public's case and other members of the PSC staff make every effort to reach a solution that is equitable for all parties.

Those who oppose a company's request are given an opportunity to present their case to the Commission, and may appeal to the courts if not satisfied with the Commission's decision.

The offices of Utilities and Transportation examine the companies, testify before the Commission and assist in the preparation of Reports and Orders.

Decisions are made by the Commission after the transcripts and evidence have been studied along with the recommendations of the PSC staff of attorneys, engineers and other experts.

In utility cases, the Commission determines a base on which the companies' rates are computed. The Commission then sets a rate of return, which is the ratio of earnings to investment. Rates of return are not the same for all companies because of variations in the financial structures of the firms.

In its Report and Order, the Commission gives the total amount of the increase or decrease and directs the company to file rates in conformity with that amount.

RATES REVIEWED

The rates are reviewed and are approved or rejected. If approved, they may be adjusted later if it is found they are at variance with the amount the Commission allowed. Transportation cases are conducted in a similar manner, with some variations in rate computation.

Through continuing surveillance, the Commission staff keeps informed of the companies' operations and takes appropriate action when Commission rules and regulations are violated.

The staff resolves many consumer complaints or irregularities discovered through surveillance. This is done through correspondence with the company or in informal conference with the staff and the parties involved.

If the staff cannot achieve an equitable solution, the Commission takes up the case.

In addition to rate cases and complaints, the Commission considers changes in authority, abandonment of service and company financial transactions that require Commission action.

During the fiscal year 1,509 applications were filed with the Commission and 728 cases were heard. The Commission issued 5,029 orders.

PSC REPRESENTS MISSOURIANS

As well as being a regulatory agency, the Public Service Commission represents the citizens of Missouri outside the state.

The PSC appeared a number of times during the fiscal year in matters before Federal regulatory commissions, such as the Federal Power Commission and the Federal Communications Commission.

Chairman William R. Clark, a member of the Communications Committee of the National Association of Regulatory Utility Commissioners, presented testimony in December, 1969, to the U. S. Senate in opposition to an FCC decision.

The FCC approval of a \$237 million reduction in interstate telephone tolls, Chairman Clark said, would benefit interstate callers at the expense of local telephone users.

Judge Clark told the Senate Commerce Committee that the Southwestern Bell Telephone Company was granted a \$30.6 million rate increase in Missouri shortly before the FCC decision was announced, and the Bell System had intrastate rate increases pending in many other states.

The committee was told by Chairman Clark that the Senate should pass a bill giving state commissions a voice in allocating interstate costs, and should stay the FCC decision until the bill was approved.

The Missouri Commissioners sometimes are asked to assist the Federal bodies. Judge Charles J. Fain sat with the ICC in the fall of 1969 when that agency heard the railroads' request for a 6 per cent nationwide freight rate increase.

COMMITTEE SERVICE

The PSC Commissioners serve on national, regional and state committees dealing with regulatory matters. In cooperation with regulatory agencies of other states and the Federal government, the PSC has helped with the solution of joint problems and development of new ideas in utility regulation.

In the following sections, the function of the offices of the Commission is explained.

FORMER COMMISSIONERS

Donal D. Guffey	1963–1968	George H. English	1931–1936
E. L. McClintock	1945–1967	J. H. Porter, Chairman	1925–1933
Frank W. May	1961–1967	Harry E. McPherson	1934–1935
William Barton	1957–1965	J. C. Collett, Chairman	1933–1935
Tyre W. Burton, Chairman	1952–1965	J. Fred Hull	1929–1934
Frank J. Iuen	1959–1963	Milton R. Stahl, Chairman	1929–1933
D. D. McDonald	1955–1961	S. M. Hutchison	1925–1931
M. J. McQueen	1954–1956	Almon Ing	1925–1933
Charles L. Henson	1942–1959	Chairman	1928–1929
Maurice W. Covert	1952–1953	J. P. Painter	1928–1929
Frank Collier	1953–1954	Thomas J. Brown	1923–1928
Henry McKay Cary	1950–1951	Chairman	1924–1928
John P. Randolph	1949–1951	D. F. Calfee	1925–1929
Morris P. Osburn, Chairman	1945–1952	Merrill E. Otis, Chairman	1923–1924
Agnes Mae Wilson	1943–1949	Richard H. Musser	1923–1925
Kyle Williams	1941–1952	A. J. O'Reilly	1921–1925
Chairman	1944–1945	Hugh McIndoe	1921–1923
Richard Arens	1944–1945	John A. Kurtz	1920–1923
Albert Miller, Chairman	1943–1944	Chairman	1921–1923
John A. Ferguson	1936–1944	Edward Flad	1917–1921
Frederick Stueck, Chairman	1941–1943	Noah W. Simpson	1917–1923
Paul Van Osdol	1941–1943	David E. Blair	1917–1920
J. D. James	1937–1942	William G. Busby, Chairman	1916–1921
Chairman	1937–1941	Eugene McQuillin	1915–1921
Marion S. Francis	1938–1941	Edwin J. Bean	1914–1925
John S. Boyer	1935–1941	* Howard B. Shaw	1913–1917
Sam O. Hargus, Chairman	1935–1937	* Frank A. Wrightman	1913–1916
Scott Wilson	1938–1941	* John Kennish	1913–1917
William M. Anderson	1933–1938		1920–1920
Albert D. Nortoni	1936–1938	* William F. Woerner	1913–1914
William Stoecker	1933–1936	** John M. Atkinson, Chairman	1913–1916

* First Commissioners

** First Chairman

The Commissioners' Secretaries

**Carole E. Maher, Administrative Secretary to
Chairman William R. Clark**

**Marjorie Hardin Horn, Administrative Secretary to
Vice-Chairman Marvin E. Jones**

**Marie Colvin, Administrative Secretary to
Commissioner Charles J. Fain**

**Pearl D. Mutert, Administrative Secretary to
Commissioner Howard Elliott, Jr.**

**Wanda F. Larsen, Administrative Secretary to
Commissioner Willard C. Reine**



SAM L. MANLEY
Secretary



Office of the Secretary

The administration of the Commission office and the maintenance of complete records of Commission proceedings are directed by the Secretary.

The present Secretary is Sam L. Manley.

Companies wishing to obtain PSC authority or to change their existing authority present their applications to the Secretary.

An Assistant Secretary is responsible for all utility applications, while transportation applications are made with another Assistant Secretary.

The applications are processed by the Secretary's office, which then notifies parties interested in the cases and schedules hearing dates.

This office assists in the preparation of Commission Reports and Orders and issues the decisions when the Commission acts.

Records of cases are kept in their original form for five years, then are placed on microfilm. Complete records from Case No. 1 to the present are available and may be examined by the public during office hours.

As administrative officer of the Commission, the Secretary is responsible for personnel and property management. He administers the Oath of Office to Commission employes and affixes the Official Commission seal to Commission documents.

The Secretary tests and interviews prospective employes and keeps personnel records.

PUBLIC INFORMATION OFFICE

The Public Information Office works with the Secretary in issuing publications and news releases concerning PSC activities.

The Commission is required by statute to publish Public Service Commission Reports, a compilation of significant Commission decisions, and the Annual Report.

The PSC Reports are prepared with the assistance of the Reporter of Opinions and are first issued in monthly advance sheets for which

subscribers pay \$15 annually to cover printing costs. The PSC Reports are later published in bound volumes.

Three other publications are issued which are sold by subscription.

A register of bus and truck cases filed each month costs \$12 per year.

Two lists of bus and truck companies operating in Missouri are available by subscription at five dollars each per year. One lists the companies alphabetically by name, and the other lists the companies under the counties in which they are located.

The docket of the next week's cases is issued by the Secretary's office each Friday. The docket contains the nature and number of the cases and other pertinent information.

All orders, transcripts and other Commission documents are printed in the Secretary's print shop. The bound PSC Reports are printed by private firms under contract.

OFFICE OF THE SECRETARY

PERSONNEL

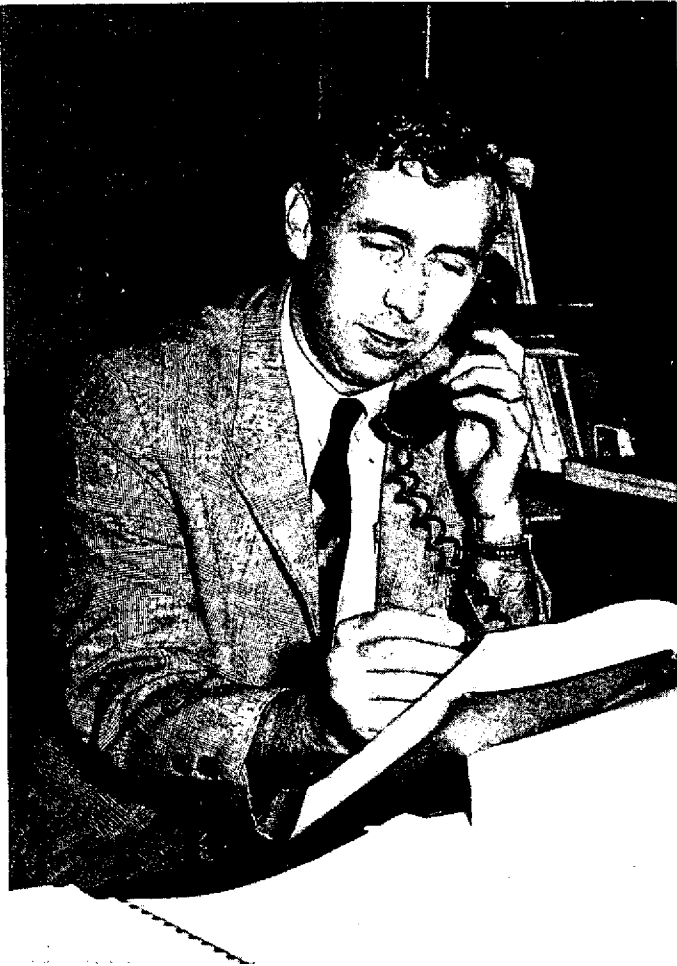
Sam L. Manley Secretary to the Commission
Judith E. OliverSecretary to Mr. Manley
Ann M. CraigAssistant Secretary to the Commission
Wanda L. TiptonAssistant Secretary to the Commission

Genevieve L. Amptman Receptionist
Harry R. Baker Duplicating Equipment Operator II
Gilbert J. BaxDuplicating Equipment Supervisor
Earl J. Bolton Machine Operator & Mail Clerk
Eugene B. Jefferson Custodial Worker II
Jane Larm Receptionist
Julius Mulkey Clerk III - Librarian
Estelle C. Murray Hearing Notice Clerk
Leola A. ParkerChief Clerk
G. Leota PerdueClerk I (Microfilm)
Mary C. Potts Secretary
Wallace L. Powell Custodial Worker II
Irene E. Ulstad Clerk III
Deborah R. Vincent Report and Order Clerk

PUBLIC INFORMATION OFFICE

* Jane A. Erickson..... Public Information Officer
Harriett L. SwingerClerk-Stenographer II

* Succeeded October 6, 1969, by A. S. Forsythe



JEREMIAH D. FINNEGAN
General Counsel

Office of the General Counsel



The General Counsel is the attorney for the public in proceedings before the Commission and represents the public and the Commission in the courts.

The present General Counsel is Jeremiah D. Finnegan.

Advice and opinions are provided to Missourians by the General Counsel concerning their rights under public Service Commission law and the legal methods and procedures for protecting those rights.

At the direction of the Commission, the General Counsel may commence and prosecute actions and proceedings in the name of the State.

During the fiscal year, 809 cases were presented to the Commission by the General Counsel. Twelve of the proceedings were rate cases that required lengthy preparation, briefing and hearing.

Fifteen cases were appealed; 12 to the Circuit Court and three from the Circuit Court to the Kansas City Court of Appeals. The General Counsel filed one statutory penalty action and one injunction action, and was required to answer a declaratory judgment action.

Five of the cases were pending at the end of the fiscal year. The Commission and the citizens of Missouri were represented by the Office of General Counsel before the Interstate Commerce Commission in 10 proceedings, most of them passenger train discontinuances, and before the Federal Power Commission in two rate cases.

Official opinions are rendered by this office for the public, the Commission and the PSC staff. During the past year, 18 opinions, each requiring extensive research and review, were issued by the Office of General Counsel. The opinions are headnoted, indexed and filed for quick reference.

HEARING EXAMINERS DEPARTMENTS

Each Commissioner is assigned a hearing examiner who prepares tentative Reports and Orders and assists the Commission during hearings. When the Commission wishes, Hearing Examiners may preside in place of Commissioners at proceedings in which evidence is taken. This section is directed by the Chief Hearing Examiner, who also supervises the Reporter of Opinions and the Reporting Department.

The Hearing Examiners and the Reporter of Opinions are attorneys, and three of them are associate Joint Board members of the Interstate Commerce Commission. In this capacity, the three represent the state by hearing cases for the ICC.

The Reporter of Opinions edits and proofreads all Reports and Orders and prepares headnotes for the selected cases published in the Public Service Commission Reports.

REPORTING DEPARTMENT

The Reporting Department staff records formal proceedings before the Commission and prepares transcripts of most cases. Transcripts were not required in 33 cases during the fiscal year.

Transcripts were prepared for 301 cases, a total of 28,920 pages. The department sold 48,915 transcript pages.

OFFICE OF THE GENERAL COUNSEL

PERSONNEL

Jeremiah D. Finnegan General Counsel
Linda S. Clardy Secretary to Mr. Finnegan
Errol D. Taylor Assistant General Counsel
Paula J. Musick Secretary

HEARING EXAMINERS DEPARTMENT

Robert B. Johnson Chief Hearing Examiner
David V. Bear Reporter of Opinions
H. Burks Davis Hearing Examiner
William F. Liliensiek Hearing Examiner
Dale E. Sporleder Hearing Examiner
Paul H. Reis Hearing Examiner
Betty Buchta Legal Secretary
Carol L. Spriggs Legal Secretary
Norma L. Tambke Legal Secretary
Clara M. Voss Legal Secretary
Doris Poe Coordinator of Reciprocity

REPORTING DEPARTMENT

*Lillian M. Cunningham Chief Official Reporter
Robert L. Stratman, Jr. Assistant Chief Official Reporter
Irene O. McVay Hearings Reporter II
Marilea Stadler Hearings Reporter II
Dorotha L. Sullivan Hearings Reporter II
Richard T. Waters Hearings Reporter II
Ronda S. Griggs Hearings Reporter Trainee

*Succeeded October 3, 1969, by Robert L. Stratman, Jr.



GEORGE G. FOX

Director of Transportation



Motor Carriers, other transportation companies and the rates and services of railroads are regulated through the Office of Transportation under the supervision of Director George G. Fox.

The duties of the office include enforcement of PSC rules and regulations, sale of license stickers and the maintenance of records on insurance, tariffs, time tables, rates and services.

Railroad safety matters are handled by the Office of Utilities.

New rules and regulations covering motor carrier operations were adopted by the Commission in November, 1968, and are contained in Commission General Order 33-E.

The new standards are the result of cooperative agreements between the state, the Interstate Commerce Commission and the U. S. Department of Transportation. They include changes that make state and federal safety requirements uniform.

Office of Transportation

ENFORCEMENT SECTION

Ten field inspectors, each of whom has an assigned area in the state, investigate operators to determine whether they comply with Missouri Bus and Truck Laws.

Their main objective is the promotion of safety on Missouri highways and the curtailment of illegal transportation.

The officers do not have arrest powers and so work closely with the Missouri State Highway Patrol, which makes arrests for violations of Commission law, rules and regulations.

Information concerning violations, changes in authority or accidents is shared among the PSC inspectors, the Highway Patrol, the Interstate Commerce Commission and the Department of Transportation.

All of the inspectors are graduates of national training seminars on economic and safety regulations.

The officers traveled 214,805 miles during the fiscal year, making 1,855 contacts with certificated carriers and conducting 1,408 truck safety inspections.

INSURANCE SECTION

Carriers operating under Commission authority must file with the Insurance Section an appropriate certificate of insurance. If a carrier fails to comply, his authority is suspended.

The Commission requires insurance companies to give 30 days' notice before a carriers' insurance is cancelled. The notice is forwarded to the carrier, who must provide the Commission with proof of continued coverage if he wishes to avoid suspension.

Carriers who meet financial qualifications are permitted to insure themselves.

In the past fiscal year, 7,762 insurance certificates were received and checked by the Insurance Section.

A total of 3,267 reminders was sent to carriers whose insurance had been cancelled. The authority of 1,101 carriers was suspended for failure to reinsure. By June 30, 1969, 661 of the suspended carriers filed satisfactory evidence of insurance and was reinstated.

Many who allow their insurance to lapse do not intend to resume operations. The permits or certificates of 262 carriers were cancelled during the year for failure to reinsure.

Under special circumstances, the Commission may waive the requirement for cargo insurance, usually if the cargo is of comparatively low value. Contract carriers may obtain a waiver on cargo insurance upon agreement with the shipper.

LICENSE AND RECORDS SECTION

Annual license stickers are issued by this section for a fee of \$25. The stickers are required on all motor vehicles operating under Commission authority, except those who are covered by a reciprocal agreement Missouri has with 27 other states.

The License and Records Section this year began a system through which licenses may be obtained by telegram. These are honored by enforcement officers for up to 24 hours pending receipt of the annual license stickers. A total of 742 wires was issued during the fiscal year.

Sticker sale receipts for the fiscal year totaled \$990,255; a 14.6 per cent increase over the previous fiscal year total of \$863,573. The collections are deposited in the State Highway Department Fund, from which a portion of the Commission's budget is appropriated.

The remainder of the budget is appropriated from the State General Revenue Fund and the Public Service Commission Fund, which is supported by assessments from utilities.

The monthly collections for sticker sales are shown in Figure 1.

This section maintains case files on each carrier and also keeps a file of all motor carrier applications to the Interstate Commerce Commission for operations in Missouri.

FIGURE 1
MONTHLY LICENSE STICKER COLLECTIONS

	TRUCK	BUS	TOTAL
July, 1968	\$ 31,734.00	\$ 325.00	\$ 32,059.00
August, 1968	21,702.00	350.00	22,052.00
September, 1968	11,816.00	200.00	12,016.00
October, 1968	14,768.00	150.00	14,918.00
November, 1968	8,824.00	50.00	8,874.00
December, 1968	532,136.00	40,800.00	572,936.00
January, 1969	\$148,275.00	\$ 5,135.00	\$153,410.00
February, 1969	43,715.00	900.00	44,615.00
March, 1969	37,148.00	375.00	37,523.00
April, 1969	35,875.00	1,175.00	37,050.00
May, 1969	28,715.00	850.00	29,565.00
June, 1969	<u>24,512.00</u>	<u>725.00</u>	<u>25,237.00</u>
TOTAL	\$939,220.00	\$51,035.00	\$990,255.00

The Chicago, Burlington & Quincy and the Chicago, Rock Island & Pacific railroads requested a 10 per cent increase in passenger coach fares to take effect August 1, 1968. The Atchison, Topeka and Santa Fe and the Kansas City Southern railroads asked for a 10 per cent raise in first class and coach fares, effective June 15, 1969. The Missouri Pacific Railroad requested a 5 per cent increase in passenger rates, also effective June 15.

In the belief that the increased fares would help preserve passenger service, the Commission permitted the fares to become effective as filed.

DISCONTINUANCE DENIED

The Commission turned down Missouri Pacific's request to discontinue its passenger trains between St. Louis and Kansas City. The railroad appealed to the ICC and was given permission to drop two of the four trains. The Public Service Commission, the City of Jefferson City and the United Transportation Union obtained an injunction in December, 1969, in U. S. District Court and the trains were to continue to run while the court studied the case.

The Norfolk and Western Railway was permitted to discontinue its two remaining passenger trains operating between Kansas City and St. Louis after the Commission found that few persons between the metropolitan areas were using the service, alternate carriers were available and the company was losing a substantial amount of money on the trains.

The Pullman Company was dissolved as a result of declining service, and on January 1, 1969, the railroads that wished to continue pullman operations started using their own sleeping cars.

RAILWAY EXPRESS

Railway Express Company during the year increased its class and commodity rates due to higher operating costs that would have caused a deficit of about \$42 million in the fiscal year.

REA continued to transport most of its shipments in its own trucks under the 'Hub Plan' established in 1968. Because of a lack of intrastate motor carrier authority and suitable rail service in some areas, the company maintained its embargo on intrastate shipments to a number of cities and towns in Missouri.

The total track mileage of Class 1 railroads in Missouri was 10,889 miles as of December 31, 1968, a decrease of seven miles from the previous year's total. There were no major abandonments. Track mileage of each Class 1 railroad is shown in Figure 2.

TRUCK RATE REQUEST

There was no general increase in truck rates during the year. The Middlewest Motor Freight Bureau filed a 5 per cent increase in rates on shipments of less than 1,000 pounds and a 3 per cent increase on larger shipments.

A hearing was held in June, and the case was pending at the close of the fiscal year. Also pending were two applications for increases in dump truck rates.

Most intercity bus carriers filed a 10 per cent increase in fares to become effective April 15, 1969. The Commission suspended the increase and began an investigation. The suspension was removed on April 25, but the investigation continued. A nationwide investigation of bus fares also was being conducted by the ICC.

The bus lines filed a 10 per cent increase in bus express rates to become effective June 10, 1969. That increase was suspended and set for hearing.

The operating revenues of the major bus lines in Missouri rose 3.8 per cent over 1967 levels, while operating expenses increased 4.5 per cent. The average expense of 56.8 cents per mile was 3.8 cents above the 1967 average.

FIGURE 2

CLASS 1 RAILROAD TRACK MILEAGE IN MISSOURI

<u>RAILROADS</u>	<u>MAIN</u>	<u>SECOND</u>	<u>PASSING</u>	<u>TRACKS</u>	<u>WAY & YARD</u>	<u>TOTALS</u>
	<u>LINE</u>	<u>MAIN</u>	<u>OTHER</u>	<u>CROSSOVERS</u>	<u>SWITCHING</u>	
	<u>TRACKS</u>	<u>TRACKS</u>	<u>MAIN</u>	<u>TURNOUTS</u>	<u>TRACKS</u>	
			<u>TRACKS</u>			
Atchison, Topeka & Santa Fe	291.89	197.85	26.54	36.76	58.33	611.37
Chicago, Burlington & Quincy	1282.67	31.25	---	140.09	347.75	1801.76
Chicago & North Western	101.22	3.61	---	9.11	20.42	134.36
Chicago, Milwaukee, St. Paul & Pacific	156.62	57.99	12.83	30.55	104.88	362.87
Chicago, Rock Island & Pacific	509.88	66.00	27.60	46.09	124.88	774.45
Gulf, Mobile & Ohio	245.01	11.64	---	46.01	49.35	352.01
Illinois Terminal	2.54	---	---	.41	9.55	12.50
Kansas City Southern	202.29	10.33	---	48.52	120.62	381.76
Missouri - Illinois	238.96	24.56	---	26.12	24.59	314.23
Missouri - Kansas - Texas	391.26	1.45	---	36.97	81.55	511.23
Missouri Pacific	1360.21	199.65	3.29	166.46	539.98	2269.59
Norfolk & Western	637.49	74.93	13.40	107.25	259.67	1092.74
St. Louis - San Francisco	1379.26	31.10	---	162.35	393.62	1966.33
St. Louis Southwestern	219.09	14.79	---	20.12	28.66	282.66
Union Pacific	1.98	1.54	---	5.77	11.97	21.26
TOTALS	7020.37	726.69	83.66	882.58	2175.82	10889.12

OFFICE OF TRANSPORTATION

PERSONNEL

George G. Fox Director of Transportation

Loretta Fitzpatrick Secretary to Mr. Fox

ENFORCEMENT SECTION

* J. Sidney Schanbacher Chief Enforcement Officer

Barbara J. Bahr Clerk-Stenographer III

Jimmy F. Brackett Field Inspector

Billy J. Broyles Field Inspector

Robert M. Eberting Field Inspector

James M. Kearnes Field Inspector

George E. Phipps Field Inspector

Bernard J. Scheve Field Inspector

Lewis B. Swiney Field Inspector

Walter C. Walton Field Inspector

Ernest Wilson Field Inspector

INSURANCE SECTION

Marguerite Smith Chief Insurance Clerk

Bernice H. Hoelscher Clerk-Typist II

Sondra K. Monroe Clerk-Typist III

* Succeeded July 1, 1969, by Ralph M. Toalson, Jr.

LICENSE AND RECORDS SECTION

Judith A. Kolb Chief License Clerk
Doris D. Bossaller Clerk-Typist III
Lucille DeBroeck Clerk-Typist III
Lorenzer Sears Clerk-Typist III

OPERATING RIGHTS SECTION

Ray N. Allmon Chief, Operating Rights
Ralph M. Toalson, Jr. Field Investigator
Beverly J. Chaloupek Clerk-Stenographer III
Robert L. Witthar Rate Expert

RATES AND SERVICES SECTION

Robert F. Hency Chief Rate Expert
Carol L. Berendzen Clerk-Stenographer III
Robert K. Buell Rate Expert
Edward Fritsch Accountant-Analyst
G. H. Havens Rate Expert



F. D. HEQUEMBOURG
Director of Utilities



Office of Utilities

The Commission is assisted in implementing its jurisdiction over public utilities and railroad safety by the Office of Utilities.

The Director of the Office of Utilities is F. D. Hequembourg, who coordinates the work of two departments, Accounting and Engineering.

The experts in these departments investigate the physical and financial structures of companies, and present their findings and recommendations to the Commission.

This work includes determination of rates of return, depreciation, costs and the safety and adequacy of service. Railroad matters other than safety are the responsibility of the Office of Transportation.

ACCOUNTING DEPARTMENT

The accounting procedures of utilities under Commission regulation are controlled by the Accounting Department, which also keeps the accounts of the Commission.

The utilities must use a standard accounting system that facilitates the work of the department in checking the companies' annual reports and making audits.

Audits and investigations conducted by the staff are in three categories: comprehensive office audits of annual reports; audits in conjunction with rate investigations, and compliance audits.

Special investigations and statistical studies also are made by the staff.

About 250 annual reports from utilities are received by the Commission each year. These reports reflect the financial condition of the companies and provide operating statistics that are invaluable to the Commission.

The staff reviews the reports and assists the utilities with problems in connection with the preparation of the reports.

AUDIT RESULTS

Rate audits, performed either in the Commission's offices or in the field, provide information about the original cost of the property used by the utility, the financial condition of the company and the adequacy of the firm's records.

During the fiscal year, the Accounting Department concluded 12 audits and examinations; six were major audits. The department currently is working on 13 audits and examinations that are expected to be completed during the 1969-70 fiscal year.

A list of the audits made by the staff during the year and their cost is shown in Figure 1.

The utility consulting firm of Troupe, Kehoe, Whiteaker and Kent was employed by the Commission to perform three audits during the year and to represent the PSC before the Federal Power Commission in a case involving Panhandle Eastern Pipe Line Company.

A list of the audits made by the consulting firm and their cost is shown in Figure 2.

The case before the FPC resulted in a reduction of the company's rates and a refund of an additional \$102,000 over the excess charges estimated to have been collected by the pipeline company. The consulting firm was paid \$12,866 for its service.

SECURITIES EXAMINED

Utilities may issue securities only with Commission approval and upon payment of an authority fee to the Commission. Securities issues first are examined by the Accounting Department.

During the fiscal year, the Commission authorized issuance of securities valued at \$229,784,107. New capital expenditures represented \$229,404,107 of that amount, and refunds of outstanding indebtedness amounted to \$380,000.

The type and amount of the securities issued are shown in Figure 3.

Authority fees of \$52,176 and miscellaneous fees of \$17,089 were collected and credited to the State General Revenue Fund.

A portion of the Commission's budget is appropriated by the General Assembly from the Public Service Commission Fund, which is maintained with assessments from utilities.

FIGURE 1

AUDITS PERFORMED BY THE COMMISSION STAFF DURING
FISCAL 1968-1969

		<u>CODE*</u>	<u>COST</u>
The Gas Service Company	Case No. 16,653	C	\$17,828.72
Missouri Public Service Company	Case No. 16,569	C	7,047.96
Missouri Utilities Company	Case No. 16,697	C	1,752.51
St. Louis County Water Company	Case No. 16,563	C	16,216.35
St. Joseph and Joplin Water Companies	Case No. 16,453	C	
	Case No. 16,454	C	22,218.81
Missouri Telephone Company	Case No. 16,662	O	13,555.28
Laclede Gas Company	Case No. 16,689	C (1)	4,438.51
Union Electric Company	Case No. 16,654	O	38,705.25
General Telephone of the Midwest		O	7,349.17
Mark Twain Rural Telephone Company	Compliance	O	2,924.05
Milan Telephone Company		O	2,497.46
Missouri State Telephone Company	Compliance	O	9,071.24
Rock Port Telephone Company		O	2,522.65
Kansas City Power and Light Company	Case No. 16,803	O	2,950.03
Missouri Natural Gas Company	Case No. 16,822	O	3,158.92
Missouri Central Telephone Company	Compliance	O	1,352.28
Ozark Water Company	Rates	O	407.95
Missouri Power and Light Company	Rates	O	236.34
Southwestern Bell Telephone Company	Case No. 16,642	C (1)	32,067.61
United Telephone Company	Compliance	O	8,362.97

* C Completed
O Not Completed

(1) Work Completed After Close of 1968-69 Fiscal Year.

FIGURE 2

AUDITS PERFORMED BY THE UTILITY CONSULTING FIRM OF
TROUPE, KEHOE, WHITEAKER AND KENT DURING FISCAL 1968 - 1969

		<u>COST</u>
Laclede Gas Company	Case No. 16,689	\$22,419.51
Southwestern Bell Telephone Company	Case No. 16,642	40,000.00
St. Joseph and Joplin Water Companies	Case No. 16,453	
	Case No. 16,454	3,994.74

FIGURE 3

SECURITIES ISSUED BY UTILITIES WITH PUBLIC SERVICE

COMMISSION APPROVAL DURING FISCAL 1968-1969

First Mortgage Bonds	\$121,600,000
Debentures	40,000,000
Common Stock	34,845,588
Preferred Stock	21,000,000
Notes	<u>12,338,519</u>
Total	\$229,784,107

FIGURE 4

ASSESSMENTS OF UTILITIES FOR OPERATION OF THE PUBLIC
SERVICE COMMISSION DURING FISCAL 1969 - 1970

Railroad Corporations	\$ 111,343.00
Street Railroad Corporations	1,251.00
Other Common Carriers (Railway Express Company)	1,000.00
Electric, Gas, Water, Sewer, Heating and Telephone Companies	1,135,451.00
Telegraph Corporations	<u>2,000.00</u>
Total	<u>\$1,251,045.00</u>

The assessments are made annually by the Accounting Department. The rest of the Commission's budget is appropriated from the State Highway Department Fund, in which the Commission deposits motor carrier annual license fees, and the State General Revenue Fund.

The Cost Accounting Section allocates the assessments on a base of the companies' gross revenues during the prior year. The assessments are subject to Commission approval.

The utilities were assessed a total of \$1,251,045 for the present fiscal year. Any surplus is carried over to the succeeding fiscal year.

A breakdown of the assessments is shown in Figure 4.

ECONOMIC RESEARCH

The Commission created during the fiscal year the Economic Research Department, which provides economic and financial analyses of Missouri utilities.

Testimony concerning public utility rate of return is prepared by the department for use in rate cases before the Commission.

The Economic Research Department is developing a "Framework for Analysis" series that presents the economic and financial concepts needed in evaluating public utilities.

The program includes informal seminars for discussion of issues in the series and other topics.

In order that all information within the Commission may be efficiently used, the department catalogues and cross-indexes all data and circulates a list of new articles, publications and information received.

A procedure is being developed for obtaining as

quickly as possible additional information not maintained by the Commission.

Specific analytical reports concerning particular phases of public utility operation are prepared by the department.

An automated system for publishing continuing and ad hoc reports on aspects of public utility regulation is being considered. The reports would cover evaluation of utility profit levels, product pricing and other performance-related topics.

ENGINEERING DEPARTMENT

The Engineering Department staff of engineers and technicians investigate utilities and review tariffs.

Included in their duties are property studies of companies' depreciation, original cost and trended original cost less depreciation. More than 10 of these extensive examinations were made during the year and the reports were important in the consideration of rate cases.

The Engineering Department ensures that the utilities operating in the state provide safe and adequate service.

The engineers investigate any natural or mechanical incident that causes major service disruptions in utility or railroad operations. Electrical power outages, gas explosions and other emergencies are studied and a report is made to the Commission.

The department reviews rough drafts of certain Session Orders and Reports and Orders of the Commission, and often prepares the rough drafts of such orders for the Commission.

During the fiscal year, the department investigated and answered complaints or requests from consumers concerning service, safety, disputes and other matters.

Several members of the department serve on the Governor's Emergency Resources Management Plan as key operating officials. This plan was established for use in the event of nuclear attack or natural disaster.

GAS SAFETY SECTION

Gas utility customers in the state are assured of safe delivery of fuel as a result of efforts of the Gas Safety Section of the Engineering Department.

The staff enforces PSC General Order No. 45--the Missouri Natural Gas Safety Code--which public gas utilities in Missouri must follow.

The U. S. Department of Transportation, following passage of the Natural Gas Pipeline Safety Act of 1968 by Congress, adopted PSC General Order No. 45 as the interim code for all Missouri gas systems.

General Order No. 45 is comparable, and in some areas more stringent, than the USAS B31.8-1968 Gas Transmission and Distribution Code for Pressure Piping published by the American Society of Mechanical Engineers (ASME).

The Commission Chief Engineer, a member of the ASME Conference Group, participates in meetings concerning the society's gas safety code.

The Missouri Gas Safety program is designed to encourage gas utilities to develop better preventive maintenance programs to reduce leakage. Several utilities as a result have instituted improved corrosion and production control.

Two engineers in the department devote full time to the development of code requirements for safer operating practices, the investigation of accidents and complaints, and the inspection of gas facilities.

The facilities of all 21 of the gas utilities operating in 450 Missouri cities and towns were inspected during the fiscal year to ensure that the safety code was being observed.

The engineers inspected safety features and company maintenance programs, and reviewed leak survey records and procedures.

Complaint investigations are made when reports indicate that an unsafe condition exists at a utility or the utility may be using operating procedures in violation of the Missouri Gas Safety Code.

Only one safety complaint was received during the year. The staff investigated, and the utility was directed to replace 875 feet of gas main.

There were five incidents during the year at utilities in which a fatality, an injury or at least \$1,000 property damage occurred. Investigation showed that only one was the fault of the utility. The others were caused by employee carelessness, arson or facility damage by another utility.

In reviewing these investigations, the department endeavors to determine whether expanded regulations would prevent future problems.

During the year, the Chief Engineer and members of his staff have attended conferences and courses to stay well-informed of technological advancements in the gas industry and of the work of other regulatory bodies in promoting safety in the industry.

RAILROAD SAFETY SECTION

Investigations are conducted regularly by the Railroad Safety Section to see that railroads in Missouri comply with the Commission's Railroad Safety Code.

Accidents, particularly those in which persons are killed or injured, are given special attention, and the staff makes routine inspections of operating equipment and property.

During the fiscal year, the staff made more than 450 inspections and met frequently with public officials and railroad representatives to discuss problems.

In cases where it appears Commission regulations have been violated, the staff gathers evidence for use in enforcing the regulations.

The Commission has authority over grade crossings and separations, and took action in several instances during the year to reduce accidents.

CONSTRUCTION APPROVED

It approved the construction of 28 grade separations, the construction or relocation of nine crossings, the installation of gates at four crossings and the placing of flashing signals at 16 crossings.

A special committee to investigate highway grade crossing accidents was appointed by Governor Warren E. Hearnes shortly after he took office and the governor named PSC Chairman William R. Clark to head the committee. The Commission staff assisted the committee in its investigations.

Upon the recommendations of the Governor's Railroad Highway Grade Crossing Committee, experimental warning signals were installed at crossings considered dangerous. It is anticipated that more of these signals will be installed.

In a related investigation, members of the Engineering Department staff worked with a diagnostic team that evaluated all grade crossings in Missouri. Other members of the team represented the railroads, the State Highway Department, the State Highway Patrol and the Federal Bureau of Public Roads.

The group is correlating its findings and is expected to issue a report in 1970.

SANITARY SEWER UTILITIES

Regulation of sewer utilities has posed new problems for the Department since the Commission's authority in this field was renewed by legislation in 1967.

The most serious complaint in sewer regulation concerns sewage backup in a customer's home. As well as being a health hazard, this type of incident often requires extensive repair.

A cooperative effort with the utilities is being made by the Department, but some problems have proved difficult to solve.

The majority of complaints, the staff has found, result from conditions caused by vandalism, illegal connections of pipes carrying more water than a system can accommodate, and breaks left unrepaired and unreported to the utility.

These conditions are aggravated by heavy rains that overburden the sewers.

The Department is concentrating on certain sewer utilities to see that maintenance to correct these situations is improved.

RATES AND TARIFFS DEPARTMENT

When a utility under Commission regulation wishes to change its charges to customers, it must file the revised tariffs with the Rates and Tariffs Department, which studies them to learn the extent and nature of the changes.

The staff makes recommendations to the Commission, and the tariffs are filed or suspended by the Commission for further study of public hearing.

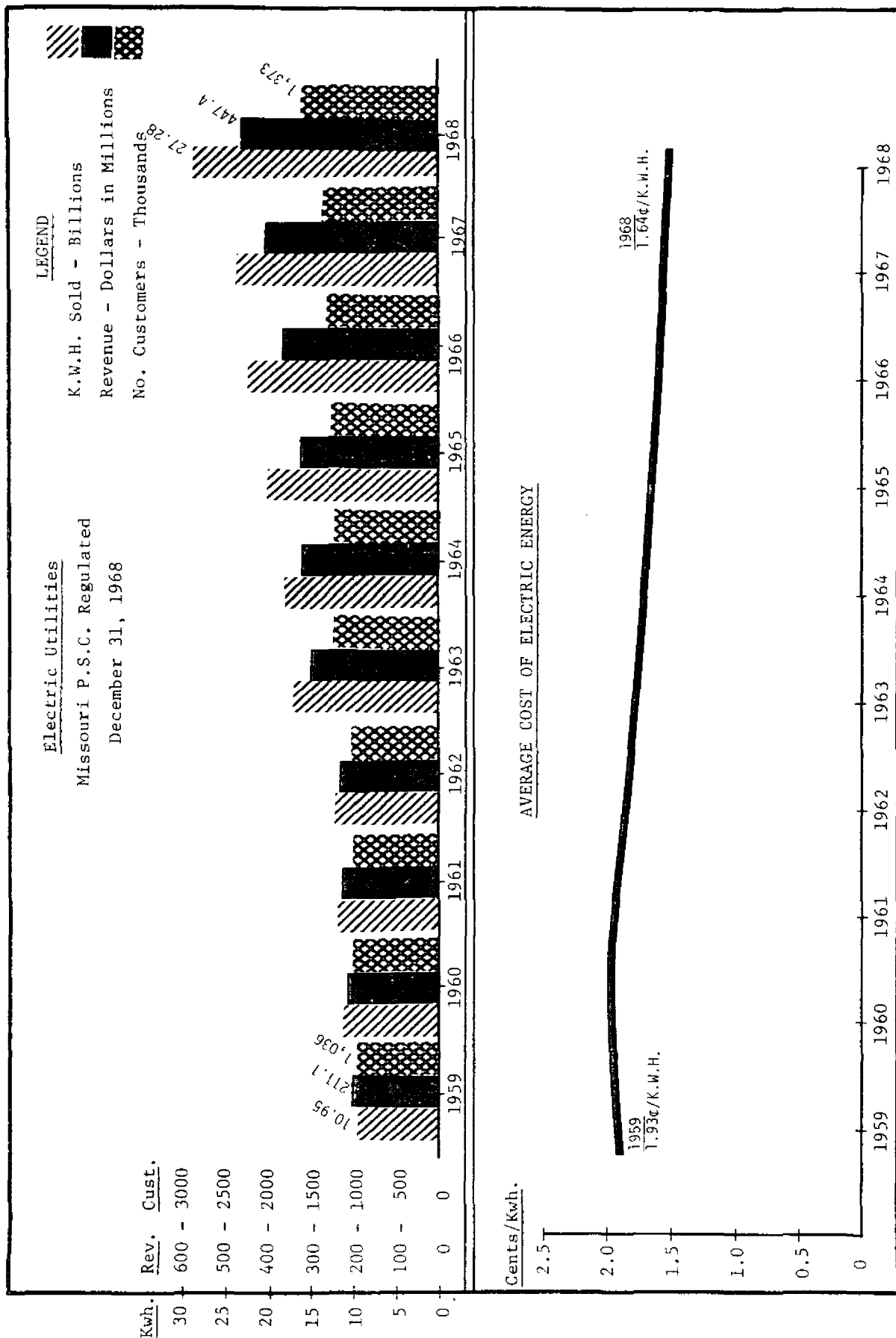
During Fiscal 1968-1969, the department processed 3,242 tariff sheets for new charges, changes in rates and tariffs and miscellaneous tariff information.

The department also handles many of the utility customer complaints and inquiries the commission receives. Approximately 4,500 responses were made by the department to individuals and companies during the year in connection with tariffs, complaints and other inquiries.

A major part of the department's work involves conferences with consumers and with officials of utility companies.

The department maintains a current file of all utility rates and other information necessary in the regulation of Missouri utilities. These statistics provide an indicator of the development of the utilities, a valuable aid in commission cases.

Figure 5



THE UTILITIES' YEAR

The utilities under Commission regulation continued their rapid growth during the year, making record investments in some instances to accommodate greater demands from existing customers and the needs of new customers.

Despite the rising cost of money, the utilities are planning more expansions, as they must be able to supply their services to all who request them.

The information given on the utilities in this section is based on company annual reports for the calendar year of 1968 unless otherwise indicated.

ELECTRIC

Investment by electric utilities in plant during the year reached a record \$2,002,535,043, an increase of 7.76 per cent over the 1967 total of \$1,858,262,675.

They sold 27.28 billion kilowatt-hours of electric energy, a rise in production of 11.4 per cent over the previous year.

Through increased efficiency of operation, the electric utilities have held the line on rates and have made reductions in some instances. The overall average cost of electric energy during the past year decreased \$.0002 per kilowatt-hour from the previous year.

Operating revenues of electric utilities in Missouri have increased by 111 per cent in the past decade, but the amount of energy sold during that period has risen by more than 149 per cent. Other statistics on electric utilities are included in Figure 5.

One of the greatest problems confronting the electric utilities is high, short-term peak demand periods. These usually occur during the summer when customers add air conditioning loads to the system.

This situation is being met in a variety of ways by the utilities, including the use of stand-by

generating plants and inter-connection agreements with other utilities and transmission companies for the purchase of energy.

TELEPHONE

The number of telephones in the state has risen more than 55 per cent in the past 10 years, reaching a total of 2,589,677 on June 30, 1968. That includes a growth of 5.6 per cent--137,906 new telephones--in the last year.

In Figure 6, the growth in the number of telephones each year is shown. Additional statistics on the telephone industry are presented in Figure 7.

Over the past few years, the companies' investment has increased by \$50 million to \$100 million annually, reaching a record total of \$1,204,761,505 in 1968.

Much of the telephone industry's construction budget in recent years had been allocated to improvement of rural and urban party line service. All companies have a goal of providing private line service for all customers inside the exchange base rate area, and rural service with no more than four parties per line.

Wide Area Service Plans for St. Louis and Kansas City were placed in service during the past year, virtually eliminating interzone calls in those areas.

The industry is making full use of its energy and resources to implement new services, such as direct distance dialing, touch tone systems, improved private branch exchanges and more sophisticated transmission and distribution facilities.

Underground installation of equipment is increasing, a practice that reduces service and trouble problems and improves the appearance of the location.

A new, universal emergency number--911--which callers may dial for all public safety agencies was to be put into use in a Missouri city for the first time in the fall of 1969. Other communities are considering the use of the number.

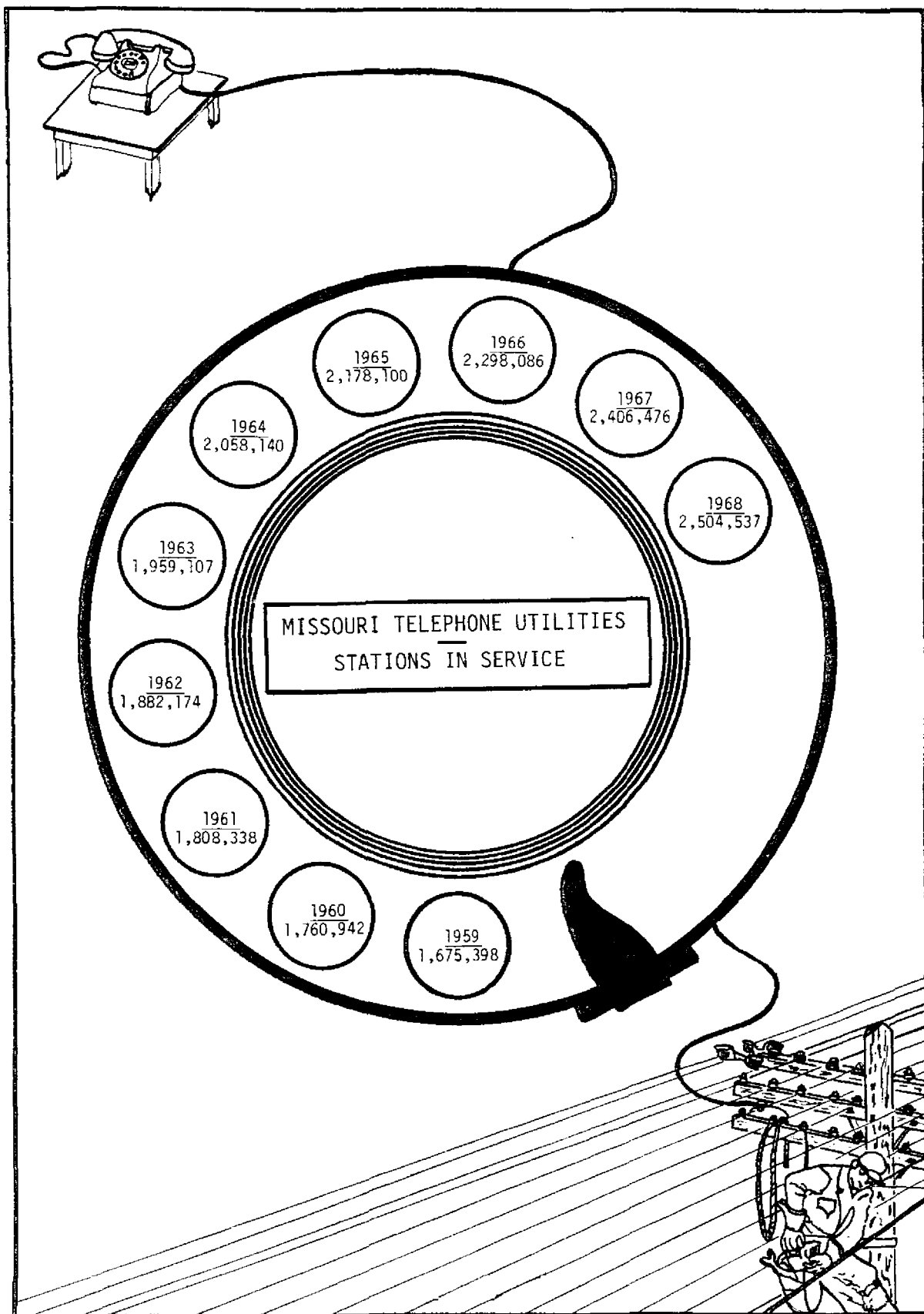


Figure 6

PERTINENT DATA ABOUT THE TELEPHONE INDUSTRY IN MISSOURI

<u>Telephones in State</u>	Telephones (Main and Extensions) <u>6-30-69</u>		
	<u>Southwestern Bell</u>	<u>Ind.</u>	<u>Total</u>
Business	605,981	90,287	696,268
Residence	<u>1,550,833</u>	<u>342,576</u>	<u>1,893,409</u>
Total	<u>2,156,814</u>	<u>432,863</u>	<u>2,589,677</u>
12 Months Gain	107,131	30,775	137,906
		<u>6-30-68</u>	
Business	574,990	79,378	654,368
Residence	<u>1,474,693</u>	<u>322,710</u>	<u>1,797,403</u>
Total	<u>2,049,683</u>	<u>402,088</u>	<u>2,451,771</u>
12 Months Gain	89,779	13,721	103,500
Number of Telephone Companies	1	70	71
Number of Telephone Exchanges and Zones	194	518	712
Per cent of Dial of Total Telephones	100.0	99.5	99.9
Per cent of Main Telephones with DDD			
Inward Dialing	100.0	98.5	99.9
Outward Dialing	84.9	22.0	71.7
Number of Base Stations Providing Mobile Telephone Service	27	22	49

Figure 7

NATURAL GAS

Many areas of Missouri received natural gas service for the first time during the past year, a result of distribution facility expansion that raised the companies' investments to a record \$404 million.

Investments during the past decade have almost doubled while the number of customers increased by about 25 per cent, an indication that more money is being invested per customer to provide more residents with natural gas service.

Although gas rates have risen along with costs, the percentage of the rate increases compares favorably with the greater investment made by the gas utilities.

Interstate pipeline companies supply natural gas to distributors in Missouri, bringing the gas from fields to the west and southwest of the state. Allocations of natural gas supplies to the utilities are made by the Federal Power Commission.

The utilities have made improvements recently in the provision of 'firm' natural gas service to commercial and industrial customers who previously had been served on an interruptible basis.

Some gas customers in Missouri are taking advantage of total energy installations that use natural gas fuel. These units provide heat, electricity, hot water and air conditioning for a limited area. Several of these plants are operating in the state.

In Figure 8 and 9 statistics on the operation of Missouri natural gas utilities during the past 10 years are shown.

WATER UTILITIES

The growth of suburban residential areas, new industrial development and the increase in per capita usage of water have placed greater loads on the water utilities.

In the past year, water utilities under PSC regulation increased their investments to \$155 million, about \$17 million more than in the previous year.

The rise in investment and revenues during the decade is presented in Figure 10.

This growth reflects the companies' development of new sources and establishment of treatment plants.

The information in Figure 11 shows that the number of customers has increased at a rather constant rate during the decade, but the amount of water used has risen sharply in the last three years.

This trend is expected to continue, placing more demands on the companies in the future.

WESTERN UNION

Western Union, one of the oldest utilities in Missouri, still derives much of its revenue from telegram messages but because of modernization and expansion is offering leased systems and record service systems that provide more economical service.

Figures presented here are for the company's entire operation because its intrastate system is so closely connected to its worldwide network that the two are difficult to separate.

The company's investment during 1968 reached a record of more than \$600 million and its gross revenues were a record \$360,094,805.

Telegram messages produced less than 50 per cent of total revenue and constituted less than 15 per cent of the total message volume.

One of the major Western Union transactions during the past year was the acquisition of the teletypewriter exchange service from American Telephone & Telegraph and AT&T's associated Bell Systems. Western Union plans to combine the teletypewriter (TWX) service with its TELEX service to give subscribers a single integrated system capable of serving different types of customers.

Western Union's growth over the past decade is presented in Figure 12.

MISSOURI NATURAL GAS UTILITIES *

1959 - 1968

	<u>Dec. 31, 1959</u>	<u>Dec. 31, 1968</u>	<u>% Increase</u>
Investment Dollars	\$ 202,963,380	\$ 404,385,905	99 %
Number of Consumers	768,244	967,557	26 %
Av. Inv. Dollars per Customer	\$ 264	\$ 418	58 %
Gas Sold - MCF			
Residential	111,642,170	142,249,233	27.4 %
Commercial	20,605,253	63,188,160	206.7 %
Industrial	67,423,878	95,701,106	41.9 %
Miscellaneous		2,600,676	
Total	199,671,301	303,739,175	52.1 %
Gas Sold - \$			
Residential	\$ 90,753,915	\$ 122,993,911	35.5 %
Commercial	15,348,499	39,114,934	154 %
Industrial	20,470,738	31,056,847	51.7 %
Miscellaneous		931,628	
Total	\$ 126,573,152	\$ 194,097,320	53.3 %
Av. Rate per MCF Sold - \$			
Residential	\$ 0.751	\$ 0.865	15.1 %
Commercial	.671	0.619	(7.7) %
Industrial	.287	0.325	13.2 %
Total	\$ 0.6339	\$ 0.639	0.8 %

* Does not include Municipal Utilities

Figure 8

MISSOURI GAS UTILITIES
 -Missouri P.S.C. Regulated-
 December 31, 1968

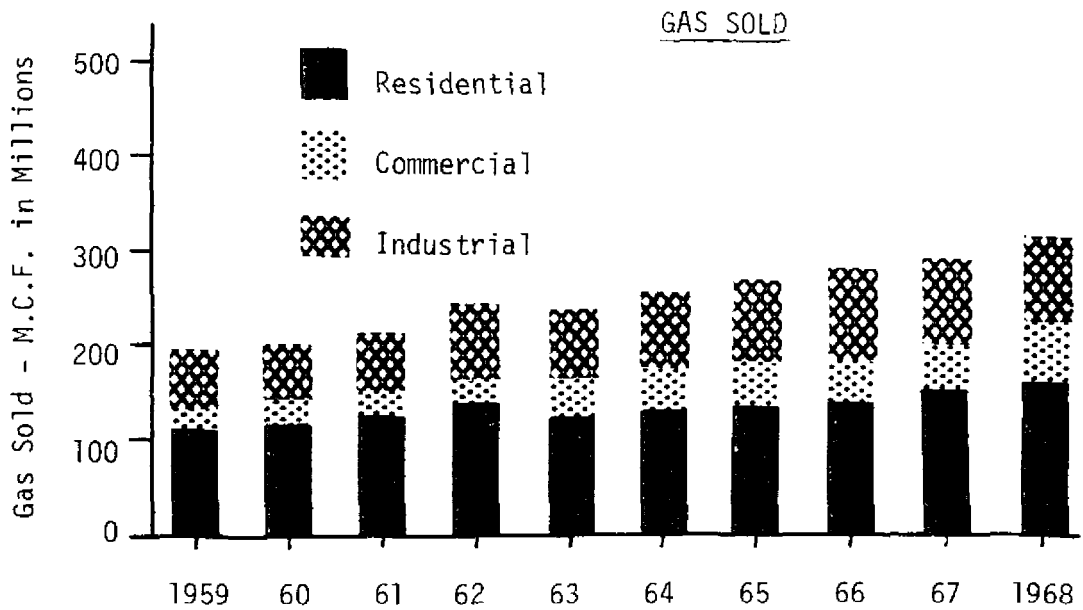
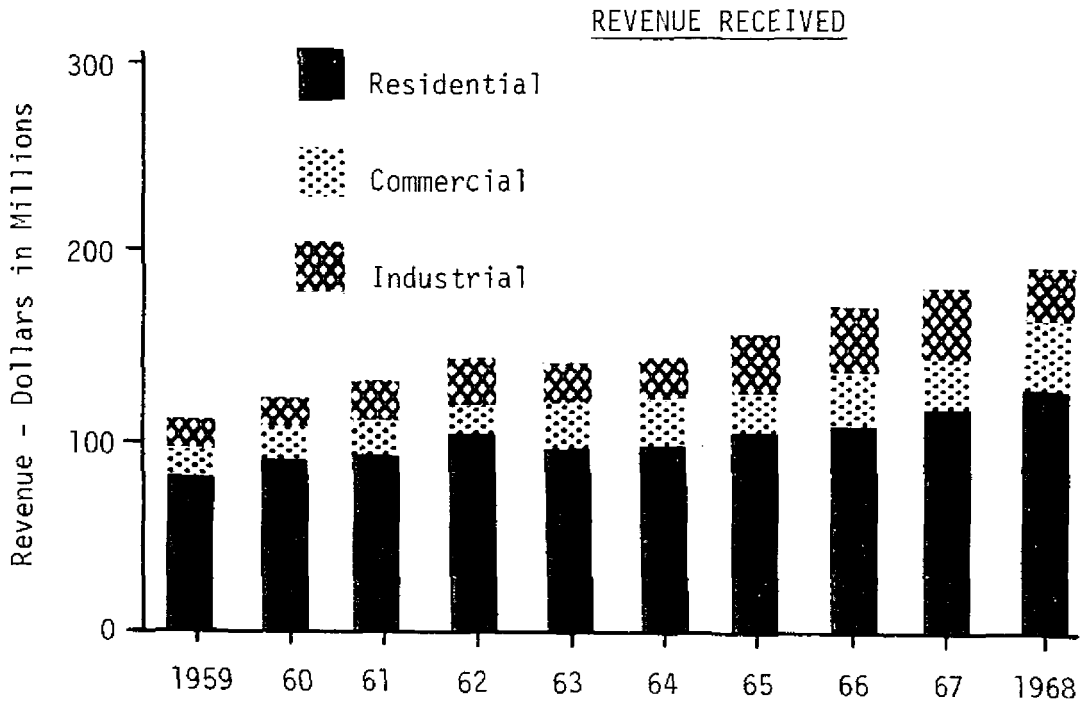
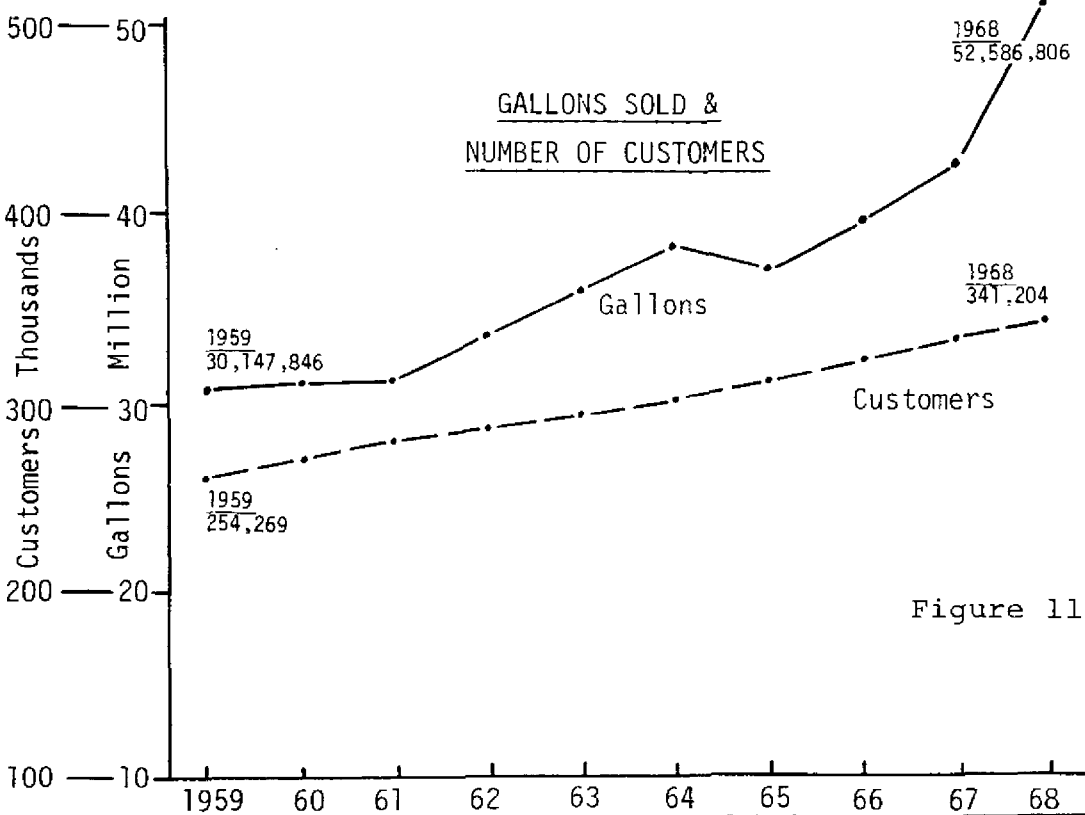
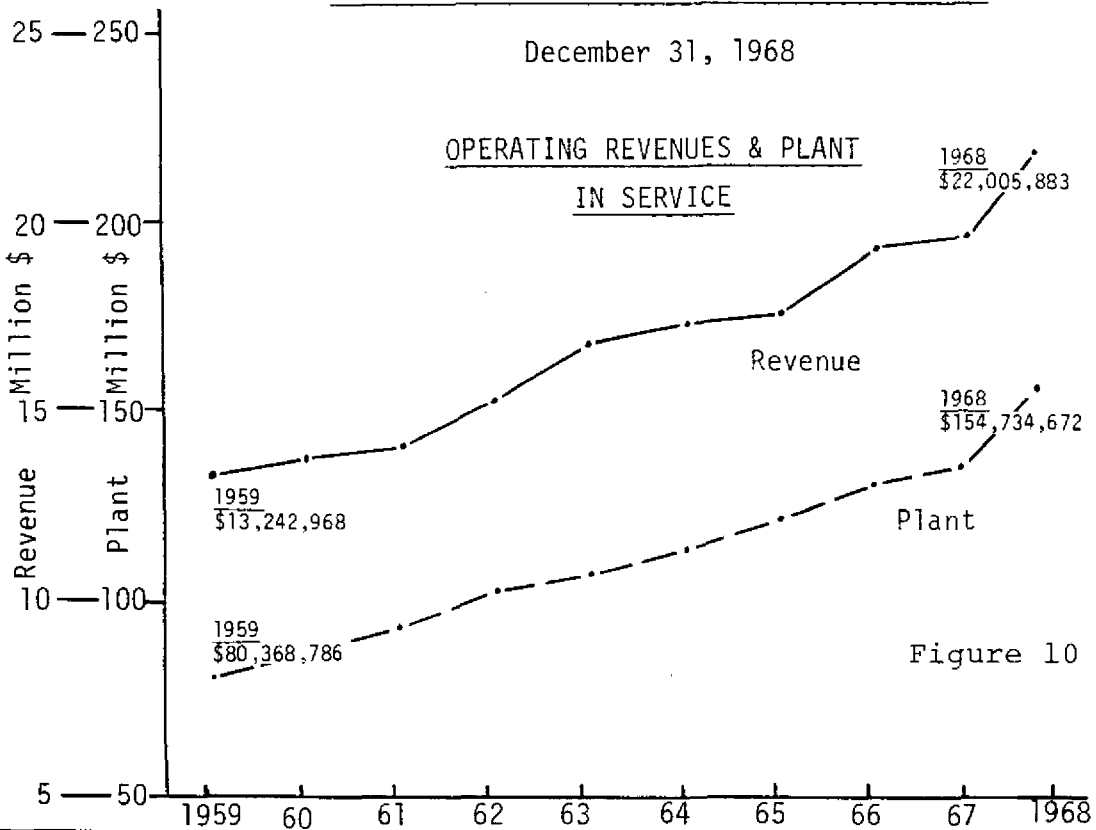


Figure 9

MISSOURI P.S.C. REGULATED WATER COMPANIES

December 31, 1968



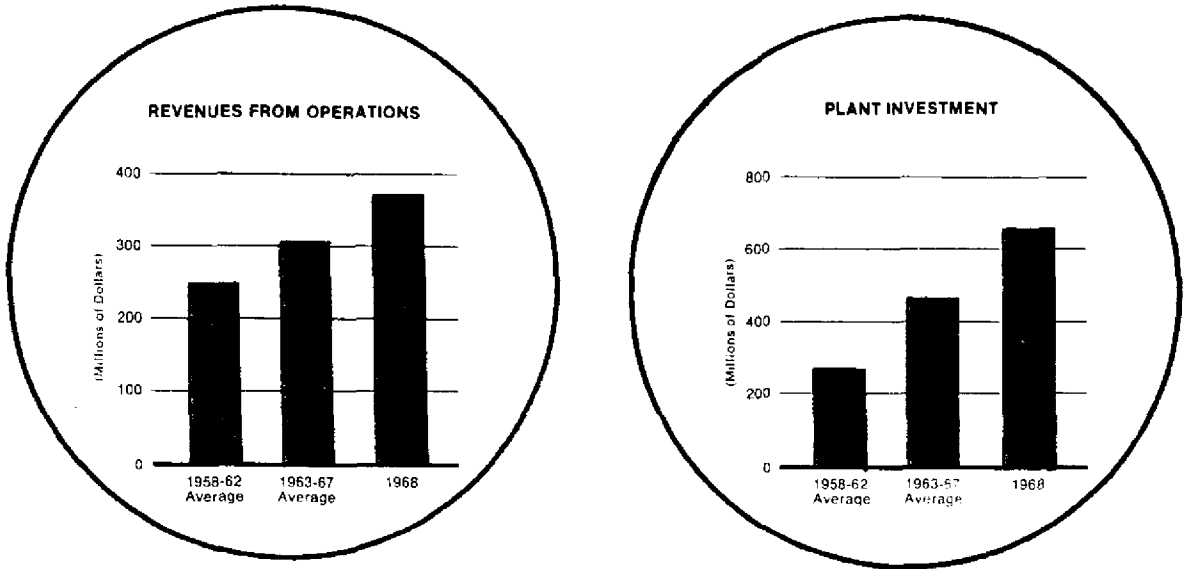


Figure 12

SANITARY SEWERS

The Commission's authority to regulate sanitary sewer utilities was reinstated by legislation in 1967 that replaced the old law, which had been ruled unconstitutional.

Since that time, the Commission has conducted an extensive program to locate and investigate sewer companies that appear to be operating as public utilities without Commission approval.

During the fiscal year, the Commission

certificated 12 sewer utilities, bringing the number of companies under Commission regulation to 28.

STEAM HEAT

Steam systems have been in existence for many years, supplying energy primarily for space heating in certain areas of the large cities of Missouri.

There has been little expansion of the three systems in Missouri, largely because the increasing use of natural gas as a space heating fuel has lowered the demand for steam heat.

OFFICE OF UTILITIES

PERSONNEL

* F. D. Hequembourg Director of Utilities
Janie Millard Secretary to Mr. Hequembourg

ACCOUNTING DEPARTMENT

Robert E. Semb Chief Accountant
Paul W. Christian Assistant Chief Accountant
Olive J. Bishop Clerk IV
Philip T. Blake Public Utility Accountant IV
Jerry L. Bowling Public Utility Accountant III
Irma P. Faris Secretary
Fay Farris Clerk-Stenographer II
Sidney M. Graf Public Utility Accountant IV
Gilbert E. Hoffman Public Utility Cost Accountant
Harvey G. Hubbs Public Utility Accountant III
A. R. Hudgins Public Utility Accountant IV
George L. Lineberry Public Utility Accountant I
Joseph L. Loethen Public Utility Accountant II
J. Frank Mauney Public Utility Accountant I
Kenneth E. Neuenschwander Public Utility Accountant IV
Norman N. Newby Public Utility Accountant IV
Curtis P. Norman Public Utility Accountant IV
Elmer J. Schlueter Public Utility Accountant II
George T. Snelling Public Utility Accountant I
Chester G. Sullivant Public Utility Accountant IV
Jacqueline S. Throneberry Clerk-Stenographer III
Rayford Windle Public Utility Accountant II

* Registered Professional Engineer

ECONOMIC RESEARCH DEPARTMENT

Terry A. Smith Chief, Economic Research
Ronald L. Shackelford Engineer IV - Research
Janet P. Walz Secretary
Alex J. Ranciglio Engineer III - Research

ENGINEERING DEPARTMENT

* Richard A. Kieselbach Chief Engineer
* John O. Richey Assistant Chief Engineer
* James H. Aikman Engineer IV
* J. C. Alexander Engineer IV
Olline M. Bailey Clerk-Stenographer III
Ivan A. Chester Engineer III
Leonard M. Coffelt Engineer IV
Jim N. Collier Engineer III
Robert E. Dorr Railroad Safety Supervisor
Frank M. Forbey, Jr. Utility Appraiser
Raymond A. Garner Meter Inspector
* William E. Hedges Engineer IV
William E. Kreisel Engineer IV
* Melvin T. Love Engineer IV
John M. Lucas Field Investigator (Railroad)
Marjorie E. Lutkewitte Secretary
Dorothy L. Miller Secretary
* Charles W. Morris Engineer IV
Larry D. Nichols Engineer III

* Registered Professional Engineer

ENGINEERING DEPARTMENT CONTINUED

Billy M. NickleEngineer Aide
Danny R. NickleEngineer Aide
Flora B. Parsons Clerk-Typist III
Robert A. Porter Clerk III - Engineering
Arlie E. SmithEngineer Aide
Charles H. Smith Engineer III
Virginia L. Vossen Clerk-Stenographer III
Jimmy L. Walker Clerk III - Engineering
* Grover R. Wicker Engineer IV
Joseph N. Zeffiro Meter Inspector

RATES AND TARIFFS DEPARTMENT

* Gordon L. Persinger Engineer IV
Catherine M. Donahue Clerk-Stenographer III
Donna R. Powell Secretary

* Registered Professional Engineer

Cases, 1968-1969

Bus and Truck

NAME AND NUMBER	SUBJECT AND DISPOSITION	NAME AND NUMBER	SUBJECT AND DISPOSITION
Ace-Alkire Freight Lines, Inc.	See McCarthy, John W.	Barnes, R. L.	See Johnson, Eugene F.
Action Murray Van Lines, T-796 Sub 2	Additional common carrier authority granted. Effective 8/27/68.	Barrett, Wayne C., T-598	Transferred common carrier authority from Edwin E. Torbit to Wayne C. Barrett. Effective 5/18/69.
Adams, Curtis, T-13,530	Transferred common carrier authority from Borden Sparks to Curtis Adams. Effective 6/7/69.	Batterton, Thomas Wm., Jr.	See Riley, Luther Wayne.
Adams, J. T., T-14,633	Transferred common carrier authority from Willard D. Wilson to J.T. Adams. Effective 10/31/69.	Beaufort Transfer Co., T-341 Sub 13	Application for additional authority. Consolidated order issued 12/11/68; case still pending.
Adams, Wallas, T-15,947	Transferred common carrier authority from L. C. Presley to Wallas Adams. Effective 2/8/69.	Beaufort Transfer Co., T-341 Sub 14	Common carrier authority over irregular route granted. Effective 4/29/69.
Anderson, Leslie	See Ray, Snowden L.	Beaufort Transfer Co., T-341 Sub 15	Application for common carrier authority over regular route. Pending.
Amsden, Ray, T-13,937	Transferred common carrier authority from Lee A. Drennen and Wayne W. Drennen to Ray Amsden. Effective 3/31/69.	Beaufort Transfer Co., T-341 Sub 16	Application for common carrier authority over regular and irregular routes. Pending.
Angel, J. C., Line Construction Co.	See Deaton, John H.	Beaufort Transfer Co., T-26,523	Transferred all intrastate authority granted in T-12,263 from T.I.M.E. Freight, Inc. to Beaufort Transfer Co. and merged with T-341. Remaining authority of T.I.M.E. Freight, Inc., designated T-12,263. Effective 7/25/68.
Appleton City Truck Line, TA-T-1353	Temporary authority granted. Effective 1/8/69.	Beaufort Transfer Co., T-26,908	Transferred portion of common carrier intrastate authority under T-12,254 from Duncan Moving and Storage to Beaufort Transfer Co. and merged with T-341. Effective 12/13/68.
Appleton City Truck Line, T-1353 Sub 1	Application for common carrier authority over irregular routes. Pending.	Beaufort Transfer Co., TA-T-341	Temporary authority extended to August 21, 1969. Effective 5/26/69.
Armentrout Coal & Trucking Service	See Armentrout Truck Line.	Beaufort Transfer Co., TA-T-341	Temporary common carrier authority over irregular route extended to June 3, 1969.
Armentrout Truck Line, T-1451	Transferred common carrier authority from Armentrout Coal & Trucking Service to Armentrout Truck Line. Effective 11/7/68.	Bentley, Ernest, T-15,662	T-11,796 retired and all common carrier intrastate authority transferred from Saline County Truck Company to Ernest Bentley and merged with T-15,662. Effective 3/31/69.
Asher, J. W., Inc., TA-T-12,515	Granted temporary common carrier authority until 12/18/68. Effective 9/24/68.	Bernskoetter Moving & Storage, T-58	Transferred common carrier authority from Edwin G. Mueller, d/b/a Bernskoetter Moving & Storage to Hulda M. Mueller, d/b/a Bernskoetter Moving & Storage. Effective 1/10/69.
Ashley, Jack L.	See Frech, Louis E.	Best Truck Lines, Inc., T-24,560 Sub 1	Temporary common carrier over irregular route, extended to May 20, 1969. Temporary authority plus additional authority combined under Sub 1 for permanent authority. Effective 5/13/69.
Auffert, Donald	See Auffert, Francis A.	Bisges, Mrs. Leo, T-12,917	Transfer of common carrier authority from Andrew C. Rackers to Mrs. Leo J. Bisges. Effective 12/28/68.
Auffert, Francis A., T-20,416	Transferred common carrier authority from Donald Auffert to Francis A. Auffert. Effective 1/6/69.		
Austin, Henry, T-26,764	Common carrier authority granted. Effective 2/4/69.		
Bailey, L. A.	See Schlemper, Edmund H.		
B & G Hauling Service, T-13,638	Transferred authority from Charles Boehmer to Lambert Trucking. Effective 11/23/68. Transferred common carrier authority from Lambert Trucking Co. to B & G Hauling Service. Effective 4/20/69.		
Banks Moving & Storage	See Morgan, Larry		
Barker, J. C.	See Caveness, Opal Odell		
Barlow Van Lines, T-7662	Transferred all common carrier intrastate authority from Albert L. Kuebler, d/b/a Twin City Transfer, Klump Transfer and Speedy Transfer to Barlow Van Lines, Inc. Effective 12/22/68.		

Black River Transportation, Inc. T-22,333 Sub 1	Application for common carrier authority over regular and irregular routes. Pending.	Bumgarner, James L., T-14,940	Transferred authority from Paul T. Wilkinson to James L. Bumgarner. Effective 8/17/68.
Bledsoe Brothers, Inc., T-13,048 Sub 1	Common carrier authority over irregular route granted. Effective 2/4/69.	Burggrabe Truck Lines, Inc. T-1606 Sub 1	Application for common carrier authority over irregular route. Pending.
Boehmer, Charles	B & G Hauling Service	Burks, George I.	See Wiechert, Orville
Bogier Trucking & Excavating Co.	See Lynn, Lloyd A.	Burnett, Harold G.	See K. W. Roach & Son.
Bond Transportation, Inc. T-27,207	Application for transfer of a portion of intrastate authority from Eagle Express, Inc. to Bond Transportation, Inc. Pending.	Cape County Private Ambulance Service, Inc., TA-A-26,372	Temporary authority extended to 4/3/69.
Bonita Motor Line, Inc., T-26,362	Portion of authority in T-1655 transferred from Eagle Express, Inc. to Bonita Motor Line, Inc., and designated T-26,362. Effective 7/7/69.	Cape County Private Ambulance Service, Inc., A-1	Common carrier authority over irregular route granted. Effective 3/14/69.
Bottoms, Charles, T-25,055	Transferred common carrier authority from Lamon Shipman to Charles Bottoms. Effective 1/20/69.	Capehart, Noble C.	See James, Lindell L.
Boyce, Larry, T-15,532	Transferred common carrier authority from G & M Trucking Service to Wilbert Earl Proctor. Effective 12/17/68. Transferred common carrier authority from Wilbert Earl Proctor to Larry Boyce. Effective 4/4/69.	Carter, W. G., Truck Service, T-13,896 Sub 2	Application for common carrier authority. Pending.
Boyington, Cecil, T-25,039	Authority canceled. Effective 7/15/68.	Carter, W. G., Truck Service, TA-T-13,896	Granted common carrier temporary authority over irregular route. Effective 3/24/69.
Bozada Drayage, TA-T-27,199	Application for temporary common carrier authority over irregular route denied 4/8/69.	Casper, Billie, T-15,157 Sub 3	Additional common carrier authority over irregular route granted. Effective 1/15/69.
Branson Truck Line, Inc., T-22,779 Sub 1	Additional common carrier authority granted. Effective 8/8/69.	Caswell, Roy R., T-10,260	T-1197 retired and transferred from Glenn Good Truck Line to Roy R. Caswell and merged with T-10,260. Common carrier authority effective 8/2/68.
Branson Truck Line, Inc., TA-T-22,779	Temporary authority extended to 10/3/68. Effective 8/8/68.	Caveness, Opal Odell, T-13,544	Transferred common carrier authority from J. C. Barker to Opal Odell Caveness. Effective 6/29/69.
Bray, Earl, Inc., T-6456 Sub 13	Granted additional common carrier authority. Effective 8/20/68.	Central Truck Service, T-22,102	Transferred common carrier authority from Ronald L. Thurman to Central Truck Service. Effective 4/26/69.
Breeding, Hugh, Inc., T-6605 Sub 7	Additional common carrier authority granted. Effective 8/20/68.	Centropolis Transfer Co., Inc., TA-T-648	Application for common carrier authority over irregular route denied 7/19/68.
Bressler, John	See Dot Line, Inc.	Chaffin, Jess, T-18,528	Transferred common carrier authority from Rector Lloyd Dubois to Jess Chaffin. Effective 10/5/68.
Brookshire, Clyde	See Klossner, J. G.	Chancey, Bobby Don, T-13,875	Transferred common carrier authority from Clettis Phillips to Bobby Don Chancey. Effective 12/22/68.
Brown, A. D.	See Nichols, William D.	Cheese Express, Inc., T-26,206-X	Granted additional contract carrier authority. Effective 8/6/68.
Brown Transfer & Storage Co., T-528 Sub 1	Application pending.	Churchill Truck Lines, Inc., TA-T-195	Application for temporary authority over regular route denied 11/29/68.
Brown Transfer & Storage Co., TA-T-528	Application pending.	Cobb, Otto	See Teeter, Troy
Broyles City Transfer & Storage Co.	See Broyles Transfer & Storage Co.	Coleman, Paul	See Eoff, Charley
Broyles Transfer & Storage Co., T-337	Transferred common carrier authority from J. O. Broyles, Gene C. Broyles, and Pearl E. Broyles, d/b/a Broyles City Transfer & Storage Co. to Gene Broyles, d/b/a Broyles Transfer & Storage Company. Effective 3/22/69.	Coleman, Virgil R.	See Crabtree, Raymond
		Columbia Yellow Cab Co., Inc., B-27,419	Application for common carrier authority over regular route. Pending.
		Columbia Yellow Cab Co., Inc., TA-B-27,419 (Cert. 779)	Application for temporary common carrier authority over regular route extended to 9/28/69.

Commercial Cartage Co., TA-T-18,161	Temporary authority extended to May 1, 1969. Temporary authority extended to August 26, 1969. Application filed 4/9/69 for temporary emergency authority for 10 days granted.	Cyrus Truck Lines, Inc., T-11,967 Sub 18 Cyrus Truck Lines, Inc., TA-T-11,967 Cyrus Truck Lines, Inc., TA-T-11,967	Granted additional common carrier authority. Effective 3/13/69. Temporary authority extended to 10/9/68. Effective 7/10/68. Temporary authority for common carrier over a regular route extended to 5/8/69. Effective 2/14/69.
Commercial Transport, Inc., T-10,288 Sub 9	Additional common carrier authority granted. Effective 9/27/68.	Dahlsten Truck Line, T-17,737	Intrastate authority granted to Dahlsten Truck Line T-25,808 merged with Permit T-17,737. Entire intrastate authority granted to Dahlsten Truck Line shall be granted to Dahlsten Truck Line shall be referred to as T-17,737. Effective 1/6/69.
Conner & Brill Gravel Co., T-12,944	Transferred common carrier authority from Lewis P. Jackson to Conner & Brill Gravel Co. Effective 6/16/69.	D & R Hauling	See Rice, Kenneth H.
Consolidated Freightways Corp., T-23,904	Transferred and retired T-1256 from Southern-Plaza Express Inc. to Consolidated Freightways Corp. and merged with T-23,904. Effective 12/27/68.	Davis, Claude E. Dawn Trucking Company Deaton, John H., T-9057	See Sheets, William C. See Maine, Winfred Authority transferred from J. C. Angel Line Construction Company to John H. Deaton. Effective 7/12/68.
Continental Trailways, Inc., B-10,241	Transferred common carrier authority from Transcontinental Bus System, Inc. to Continental Trailways, Inc. Effective 1/10/69.	Dickey, Harold, Transport, Inc., T-26,457	Application for common carrier authority over irregular route. Pending.
Crabtree Brothers Trucking Co., T-14,671	Transferred common carrier authority from Franklin D. Crabtree and Bill H. Crabtree d/b/a Crabtree Brothers Trucking to Crabtree Brothers Trucking Company. Effective 5/1/69.	Dodds Truck Line, Inc., T-871	T-509 retired and transferred from J. J. Tune to Dodds Truck Line, Inc. and merged with T-871. Effective 7/9/68.
Crabtree, Raymond, T-14,807	Transferred common carrier authority from Virgil R. Coleman to Raymond Crabtree. Effective 12/28/68.	Dodds Truck Line, Inc., Sub 15	Application for common carrier authority over irregular route. Pending.
Crawford Equipment, T-12,946	Transferred common carrier authority from Gary G. Groves to Crawford Equipment. Effective 3/29/69.	Doogs and Stuart Trucking	See Seifner, Donald.
Crawford Equipment, T-12,946	Transferred common carrier authority from Harold F. Crawford, d/b/a Crawford Equipment to Harold F. Crawford and Isla Crawford, d/b/a Crawford Equipment. Effective 5/22/69.	Dot Line, Inc., T-13,835	Transferred common carrier authority from John Bressler to Dot Line, Inc. Effective 3/10/69.
Crawford, Ray, T-13,419	Transferred common carrier authority from Eugene True to Ray Crawford. Effective 5/16/69.	Downes Truck Service Drennen, Lee A. and Wayne W. Drennen	See Thompson, H. L. See Amsden, Ray
Crites Brothers	See Hobbs, Charles Maynard	Dubois, Rector Lloyd	See Chaffin, Jess.
Crites & Sailer Construction Co., T-20,168	Transferred common carrier authority from Haul-A-Way, Inc. to Crites & Sailer Construction Company. Effective 3/31/69.	Dugan, Cecil, T-26,743	Granted common carrier authority. Effective 2/4/69. See Mid-Mo Hauling Contractors, Inc.
Crouse, A. C.	See Crouse, Charles L.	Dulle, Clem, Jr., T-26,864	Granted common carrier authority. Effective 2/4/69.
Crouse, Charles L., T-14,095	Transferred common carrier authority from A. C. Crouse to Charles L. Crouse. Effective 11/29/68.	Duncan Moving & Storage Company Dwyer Motor Freight	See Beaufort Transfer Company. See Silex Elevator.
Crown Coach Company	See Jefferson Lines, Inc.	Eads, Claudia Jean	See Keller, Otto Alfred, Jr.
Curtis, Robert	See Huggins, Bill.	Eagle Express, Inc.	See Bonita Motor Line, Inc. See Bond Transportation, Inc.
Cyrus Truck Lines, Inc., T-11,967 Sub 15	Additional common carrier authority granted. Effective 8/20/68.	Edwards, James W.	See Weir, Lester O.
Cyrus Truck Lines, Inc., T-11,967 Sub 16	Additional common carrier authority granted. Effective 12/10/68.	Ee-Jay Motor Transports, Inc., T-17,768	Granted additional common carrier authority. Effective 9/24/68.
Cyrus Truck Lines, Inc., T-11,967 Sub 17	Granted common carrier authority. Effective 9/10/68.		

Ee-Jay Motor Transports, Inc., T-17,768 Sub B	Application for common carrier authority over irregular route. Pending.	Fleener, Kenneth	See Wiseman, James R.
Ee-Jay Motor Transports, Inc., TA-T-17,768	Temporary authority extended to 9/17/69. Effective 6/20/69.	Frech, Louis E., T-14,329	Transferred common carrier authority from Jack L. Ashley to Louis E. Frech. Effective 2/2/69.
Elfrink Truck Lines, Inc., T-1084 Sub 1	Temporary common carrier authority granted to 4/17/69. Rehearing denied 4/16/69.	Freeport Transport, Inc., T-19,832	Application for common carrier authority over irregular route. Pending.
Elfrink Truck Lines, Inc., T-1084 Sub 2	Granted additional common carrier authority over irregular route. Effective 1/24/69.	Frey, Leroy	See Jones & Turner, Inc.
Elfrink Truck Lines, Inc., T-1084 Sub 3	Application for common carrier authority over regular route. Pending.	Gamm, Grover	See Perrine & Gamm
Ellie's Guided Tours, TA-B-26,533	Temporary authority extended to 9/3/69.	G & H Trucking Company	See Huot Brothers.
Ellis Petroleum Transport, Inc., TA-T-4,172	Temporary authority extended to 10/9/68. Effective 7/10/68.	G & M Trucking Service	See Boyce, Larry
Ellis Petroleum Transport, Inc., T-4,172 Sub 1	Additional common carrier authority granted. Effective 8/20/68.	Garnett, Columbus Jr., T-13,766	Transferred common carrier authority from Harry Tully to Columbus Jr. Garnett. Effective 2/8/69.
Emry, Clay, T-17,425 Sub 2	Granted additional common carrier authority over irregular route. Effective 2/4/69.	Garrett, Branon, T-13,553	Transferred common carrier authority from Pauline Millington to Branon Garrett. Effective 6/8/69.
Eoff, Charley, T-21,627	Transferred common carrier authority from Paul Coleman to Charley Eoff. Effective 3/29/69.	Geldbach Transport, Inc., TA-T-26,374-X	Temporary contract carrier authority extended to 5/29/69. Effective 3/3/69.
Erickson Transport Corp., TA-T-11,615	Granted additional common carrier authority over irregular route. Effective 3/10/69.	Geldbach Transport, Inc., T-26,374-X	Granted contract carrier authority over irregular route. Effective 4/15/69.
Erickson Transport Corp., T-11,615	Granted additional common carrier authority over irregular route. Effective 6/10/69.	Gillam, Danny and S. J. Pierce	See Masson, Archie L.
Estes, Earl	See Smart & Crenshaw.	Gist, Dale, & Sons, T-26,306	Granted common carrier authority Effective 10/10/68.
Evans, Dale, T-26,744	Common carrier authority granted 2/4/69.	Glosier Service Co., TA-T-23,615-X	Temporary contract carrier authority over irregular route extended to 9/18/69. Effective 6/23/69.
Evans, Everett, T-26,745	Common carrier authority granted 2/4/69.	Gloser Service Co., T-23,615-X Sub 1	Application for contract carrier authority over irregular route. Pending.
Everett Quarries, Co., Inc., T-13,979	Transferred common carrier authority from Everett Quarries, Inc. to Everett Quarries Co., Inc. Effective 2/9/69.	Good, Glenn, Truck Line	See Caswell, Roy R.
Exhibitors Film Delivery & Service Company, Inc. T-2999 Sub 2	Application for common carrier authority over irregular route. Pending.	Greis, Marvin Lee, T-23,626-X Sub 1	Common carrier authority granted. Effective 8/6/68.
Exhibitors Film Delivery & Service Company, Inc. T-2999 Sub 3	Application for common carrier authority over irregular route. Pending.	Greis, Marvin Lee, T-13,721 (Cert.)	Transferred common carrier authority from Greis Trucking Service to Marvin Lee Greis. Effective 1/17/69.
Farris Truck Line, TA-T-11,198-X	Temporary contract carrier authority over irregular route extended to 7/17/69. Effective 4/22/69.	Greis Trucking Service	See Greis, Marvin Lee.
Farris Truck Line, T-11,198-X Sub 4	Additional authority granted. Effective 10/8/68.	Gremore Lime Co., T-18,344 Sub 1	Application for common carrier authority over irregular route. Dismissed 11/21/68.
Farris Truck Line, T-11,198-X Sub 5	Application for contract carrier authority. Pending.	Gross & Sons Transport Company	See Moore, Gale L.
Feaster, John B. and Dorothy M., T-26,371	Common carrier authority granted. Effective 7/25/68.	Groves, Gary G.	See Crawford Equipment.
		Gunnels, Loren D.	See McMillin, L. E.
		Hackstadt, M. W., Cert.T-13,137	Common carrier authority transferred from C. O. Underwood to M. W. Hackstadt. Effective 3/24/69.
		Hageman Enterprises, T-26,708	Granted common carrier authority. Effective 3/14/69.
		H & Z Trucking	See Perkins, Harold

Hall and Wells Truck Line, T-5776	Transferred common carrier authority from McCammon Truck Line to Hall & Wells Truck Line. Effective 7/13/68.	Hobbs, Charles Maynard, T-25,063	Transferred common carrier authority from A. C. Mitchell to Crites Brothers. Effective 2/8/69.
Hall, Edward P., TA-T-26,054	Temporary common carrier authority extended to March 4, 1969. Effective 12/3/68.	Hobbs, Charles Maynard	Transferred common carrier authority from Crites Brothers to Charles Maynard Hobbs. Effective 6/29/69.
Hall, Edward P., T-26,054	Common carrier authority granted. Effective 4/8/69.	Hodge, Curtis Lee	See Swearer, Eddy N.
Hamm, Daniel Drayage Co., T-8139 Sub 10	Application for common carrier authority over irregular route. Pending.	Holcomb, Tom, T-19,337 Sub 1	Granted common carrier authority over irregular route. Effective 4/25/69.
Hamm, Daniel Drayage Co., Sub 11	Application for common carrier authority over irregular route. Pending.	Howard Construction Co., T-21,498	Retired and transferred T-14,133 from Sam Wright by Irene J. Wright, his surviving widow, to Howard Construction Company and merged with Cert. T-21,498. Effective 10/18/68.
Hannibal-Quincy Truck Line, Inc., T-727	Transferred all intrastate authority in T-19,079, Macon-Kirksville Truck Line, Inc., to Hannibal-Quincy Truck Line, Inc., and merged with T-727. Effective 3/24/69.	Huggins, Bill, T-25,903	Transferred common carrier authority from Robert Curtis to Bill Huggins. Effective 1/17/69.
Harkins, Rex	See Harkins Stock Yard.	Hunt & Son, T-17,790 Sub 3	Temporary common carrier authority extended to 5/20/69. Effective 2/20/69.
Harkins Stock Yard, T-24,604	Transferred common carrier authority from Rex Harkins to Otto Harkins and Rex Harkins, d/b/a Harkins Stock Yard. Effective 2/8/69.	Hunt & Son, Sub 8 (7)	Granted common carrier authority over irregular route. Effective 4/16/69.
Harper, Jack, T-20,364 Sub 1	Granted common carrier authority over irregular route. Effective 6/25/69.	Hunt & Son, Sub 9	Application for common carrier authority over regular route. Pending.
Harrell, Arla and Betty, T-14,513	Transferred authority from Albert C. Hill to Arla and Betty Harrell. Effective 1/2/69.	Hunt & Son, T-17,790	Transferred and retired common carrier authority under T-14,632, Midway Trucking Company to Hunt & Son. Effective 10/27/68.
Harrington, Dale, T-27,091	Granted common carrier authority over irregular route. Effective 7/1/69.	Huot Brothers, T-25,691	Transferred common carrier authority from G & H Trucking Company to Huot Brothers. Effective 5/9/69.
Harrington, Katherine	See Lewis, Charles Richard.	Irwin, Richard	See Schott, Leo Curtis, Jr.
Harrington Trucking Co., T-26,475	Common carrier authority granted. Effective 1/24/69.	Isreal Transfer & Storage Company, T-27,145	Application for common carrier authority over irregular route. Pending.
Harris Trucking Co., T-26,853	Granted additional common carrier authority. Effective 2/18/69.	Jackson, Lewis P.	See Conner and Brill Gravel Co.
Harris, Willard, T-14,992	Transferred common carrier authority from Daniel Laughlin to Willard Harris. Effective 8/23/68.	Jackson Quarries, Inc., T-21,620	Transferred common carrier authority from Glenn C. Reed to Jackson Quarries, Inc. Effective 3/4/69.
Hassler, William, Materials Co., T-15,239	Transferred common carrier authority from Estel Schmidt to William Hassler Materials Company. Effective 2/17/69.	Jackson, William E.	See Maine, Winfred
Helms, Leonard W.	See Keence, V. J.	James, Lindell L., T-25,971	Transferred common carrier authority from Noble C. Capehart to Lindell L. James. Effective 3/30/69.
Henley, L. R.	See Klipsch Hauling Company.	James, Orvil	See McDowell, W. M.
Herman Bros., Inc., T-11,881 Sub 4	Application for common carrier authority over irregular route. Pending.	Jefferson Lines, Inc., Cert. & Permit 128	Transferred common carrier authority from Jefferson Transportation Lines, Inc. Effective 10/23/68.
Hill, Albert C.	See Harrell, Arla and Betty.		
Hillis, Virgil, T-14,572	T-14,572 canceled. Effective 7/9/68.		

	Transferred and retired Cert. & Permit 2 from Crown Coach Co. to Jefferson Lines, Inc. and merged with Cert. & Permit 128. Effective 3/15/69.	Klipsch Hauling Co., T-14,381	Retired and transferred T-247 for common carrier authority from L. R. Henley to Klipsch Hauling Co. and Merged with T-14,381. Effective 5/23/69.
Jefferson Transportation Company	See Jefferson Lines, Inc.		
John's Construction Company	See Twehous Excavating Co., Inc.	Klossner, J. G., T-13,147	Transferred common carrier authority from Clyde Brookshire to J. G. Klossner. Effective 4/6/69.
Johnson, Eugene F., T-13,380	Transferred certificate of convenience and necessity from R. L. Barnes to Eugene F. Johnson. Effective 6/19/69.	Klump Transfer	See Barlow Van Lines, Inc.
Johnson, Forest, Clay Co., T-13,213	Transferred common carrier authority from Forest Johnson to Mrs. Forest (Martha) Johnson, d/b/a Forest Johnson Clay Company. Effective 6/20/69.	Koepke, Vic, Excavating & Grading Co., T-25,984	Common Carrier authority over irregular route granted. Effective 11/28/68.
		Lambert Trucking Co.	See B & G Hauling Service
		Laughlin, Daniel	See Harris, Willard
		Lawson Equipment, Inc.	See R & L Truck Line
Johnson, Kenneth E.	See S & J Trucking Company.	Leeser & Stauffer Truck Service, Inc., T-16,211 Sub 4	Application for common carrier authority over irregular route. Pending.
Jones & Turner, Inc., T-12,846	Retired and transferred T-13,013 for common carrier authority from Leroy Frey to Jones & Turner, Inc. Effective 10/3/68.	Lewis, Charles Richard, T-14,611	Transferred common carrier authority from Katherine Harrington to Charles Richard Lewis. Effective 9/22/68.
Jones, Monroe, T-26,741	Transferred common carrier authority from Roy Thompson to Monroe Jones. Effective 6/8/69.	Linch Gravel Co., T-26,742	Granted common carrier authority. Effective 2/4/69.
		Lock Brothers, Inc., T-12,245 Sub 1	Granted common carrier authority over irregular route. Effective 5/13/69.
Jordan Hauling Company	See Pioneer Hauling Co., Inc.	Logsdon, Ronald J., T-25,792	Authority cancelled. Effective 7/3/68 - See York, Floyd
Kaw Transport Co., T-9,255 Sub 16	Additional common carrier authority granted. Effective 7/23/68.	London, Earl	
Kaw Transport Co., Sub 18	Granted common carrier authority over irregular route. Effective 1/14/69.	Lottman, Walter, T-23,529-X Sub 1	Granted additional authority. Effective 8/10/68.
Kaw Transport Co., Sub 19	Application for common carrier authority over irregular route. Pending.	Luna, Joe, Cert. T-1107	Transferred common carrier authority from R. E. Luna to Joe Luna. Effective 10/12/68.
		Luna, R. E.	See Luna, Joe
		Lupkey Supreme Service	See Thomas Supreme Service
Keence, V. J., T-13,097	Transferred and retired T-14,293 for common carrier authority from Leonard W. Helms to V. J. Keence, and merged under T-13,097. Effective 10/18/68.	Lynn, Lloyd A., T-14,887	Application to transfer a portion of common carrier authority from Bogler Trucking & Excavating Co. to Lloyd A. Lynn and merge with T-14,887. Pending.
Keller, Otto Alfred, Jr., T-15,462	Transferred common carrier authority from Claudia Jean Eads to Otto Alfred Keller, Jr. Effective 12/28/68.	McCammon Truck Line	See Hall & Wells Truck Line
		McCarthy, John W., T-26,395	Portion of common carrier authority transferred from T-3,216, Ace-Alkire Freight Lines, Inc., to John W. McCarthy and merged with T-26,395. Effective 7/11/68.
Kemerling, M. E.	See Wilson, Robert Eugene		
King, David	See Steva Stone Company, Inc.	McCurry's Farm Supply, T-16,238 Sub 1	Granted common carrier authority over irregular route. Effective 4/8/69.
Kisker-Purler Excavating, T-14,637	Transferred common carrier authority from Roland I. Merx to Kisker-Purler Excavating. Effective 6/28/69.	McCurry's Farm Supply, TA-T-16,238	Temporary common carrier authority over irregular route. Extended to 5/20/69. Effective 2/20/69.
Klipsch Hauling Co., T-14,381 Sub 5	Application for common carrier authority. Pending.	McDonald, Tommy Gene, T-27,339	Application for common carrier authority over irregular route. Pending.
Klipsch Hauling Co., Sub 6	Application for common carrier authority over irregular route. Pending.	McDowell, W. M., T-13,116	Transferred common carrier authority over irregular route from Orvil James to W. M. McDowell. Effective 8/30/68.
Klipsch Hauling Co., Sub 7	Application for common carrier authority over irregular route. Pending.	McKuin, Archie, TA-T-27,109-X	Temporary contract carrier authority, extended to 6/4/69. Effective 3/7/69.

McKuin, Archie, T-27,109-X	Granted contract carrier authority Effective 6/6/69.	Missouri Funeral Supplies, T-26,436-X Sub 1	Granted contract carrier authority. T-26,436 effective 8/10/68 and TA-T-26,436-X expiring 12/11/68 canceled. Effective 12/24/68.
McLellan, Wayne C., T-26,603	Granted common carrier authority. Effective 1/14/69.		
McMillin, L. E., T-13,463	Transferred common carrier authority from Loren D. Gunnels to L. E. McMillin. Effective 5/31/69.	Missouri Pacific Truck Lines, Inc., TA-T-11,304	Temporary common carrier authority granted is extended to 2/21/69. Effective 11/26/68.
McQueen, Glenn P.	See Moulton, Orville B.	Missouri Pacific Truck Lines, Inc., T-11,304 Sub 2	Granted additional common carrier authority. Effective 12/31/68.
Macon-Kirksville Truck Line, Inc.	See Hannibal-Quincy Truck Line, Inc.	Missouri Transit Lines, Inc. B-20,621 Sub 7	Additional common carrier authority granted under Cert. 20. Effective 9/20/68.
Maine, Winfred, T-20,402	Transferred common carrier authority from William E. Jackson to Dawn Trucking Co. Effective 9/1/68.	Missouri Transit Lines, Inc. B-20,621 Sub 8	Abandoned a part of intrastate, regular-route service to Elkhurst Regional Airport. Effective 5/16/69.
	Transferred common carrier authority from Dawn Trucking Co. to Winfred Maine. Effective date 2/16/69.	Missouri Transit Lines, Inc. TA-B-20,621	Temporary authority under TA Cert. 20 extended to 11/11/68. Effective 8/8/68.
Major, Hugh, T-15,215 Sub 1	Granted additional common carrier authority over irregular route. Effective 12/17/68.	Missouri Transit Lines, Inc. TA-B-20,621	Temporary common carrier authority granted to 9/1/69. Effective 8/12/69.
Major, Hugh, Sub 2	Application for common carrier authority. Pending.	Mitchell, A. C.	See Hobbs, Charles Maynard
Major, Hugh, T-15,215	See P & P Truck Lines.	MonKem Co., Inc., T-9879 Sub 7	Additional common carrier authority granted to operate over irregular routes. Effective 9/17/68.
Marsh, Kelly R.	See Moyer Truck Line, Inc.		
Marshfield Drayage Co., T-26,150	Common carrier authority granted. Effective 7/9/68.	MonKem Co., Inc., Sub 8	Additional common carrier authority granted to operate over irregular routes. Effective 8/6/68.
Masson, Archie L., T-13,532	Transferred common carrier authority from Danny Gillam and S. J. Pierce to Archie L. Masson. Effective 3/24/69.	MonKem Co., Inc., Sub 9	Additional common carrier authority granted to operate over irregular routes. Effective 10/10/68.
Matthews, Berline, T-16,180	Transferred and retired for common carrier authority from Charles Stanley to Berline Matthews, and merged with T-16,180. Effective 2/8/69.	MonKem Co., Inc., Sub 10	Granted additional common carrier authority over irregular routes. Effective 4/16/69.
Merchants Delivery Co., TA-T-22,666	Temporary common carrier authority over irregular route. Extended to 7/21/69. Effective 4/21/69.	MonKem Co., Inc., Sub 11	Application for common carrier authority over irregular routes. Pending.
Merx, Roland I.	See Kisker-Purler Excavating	MonKem Co., Inc., Sub 12	Granted common carrier authority over irregular routes. Effective 6/13/69.
Meyer, A. T.	See Otten Truck Line		
Mid-Mo Hauling Contractors, Inc., T-26,743	Transferred common carrier authority from Cecil Dugan to Mid-Mo Hauling Contractors, Inc. Effective 5/3/69.	MonKem Co., Inc., TA-T-9879	Additional common carrier authority extended to 12/10/68. Effective 9/5/68.
Midway Trucking Co.	See Hunt & Son	MonKem Co., Inc., TA-T-9879	Application for temporary common carrier authority over irregular routes denied. Effective 10/23/68.
Midwest Installation Co., Inc., TA-T-26,874-X	Temporary contract authority granted. Extended to 8/17/69. Effective 5/22/69.	MonKem Co., Inc., TA-T-9879	Temporary common carrier authority over irregular route extended to 8/12/69. Effective 5/13/69.
Miller Brada Freight System, Inc., T-25,831	Temporary authority for common carrier extended to 2/11/69.	MonKem Co., Inc., TA-T-9879	Temporary common carrier authority over irregular route extended to 9/25/69. Effective 6/30/69.
Millington, Pauline	See Garrett, Bronon		
Missouri Agriculture Enterprises, Inc., T-14,085	Transferred common carrier authority from Slater & Fowles, Inc. to Missouri Agricultural Enterprises, Inc. Effective 5/5/69.	Montgomery Mobile Homes Sales, Inc., T-26,378	Common Carrier authority granted. Effective 5/27/69.
Missouri Funeral Supplies, TA-T-26,436-X	Temporary authority extended to 12/11/68 for contract carrier. Effective 9/16/68.	Moore, Gale L., T-27,113-X	Transferred a portion of irregular route contract authority from Gross & Sons Transport Co., T-15,009-X, to Gale L. Moore, T-27,113-X. Effective 3/15/69.
Missouri Funeral Supplies, T-26,436-X	Granted contract carrier authority. Effective 8/10/68.	Moore, Thomas, Truck Line	See Witte Brothers Exchange, Inc.

Morgan, Larry, T-21,597	Transferred a portion of common carrier authority from Banks Moving & Storage, T-4,329, to Larry Morgan and merged with T-21,597. Effective 8/15/69.	Owens, William "Bill", T-27,022	Granted common carrier authority. Effective 4/8/69.
Moses, Orie, T-25,815	Granted common carrier authority over irregular routes. Effective 12/31/68. Authority cancelled, effective 2/27/69.	Pace & Chapman, T-26,605	Application for common carrier authority over irregular route denied 5/13/69.
Moulton, Orville B., T-15,627	Transferred common carrier authority from Glenn P. McQueen to Orville B. Moulton. Effective 8/8/68.	P & P Truck Lines, T-26,935	Transferred portion of common carrier authority under T-15,215, from Hugh Major to P & P Truck Lines. Effective 3/7/69.
Moyer Truck Line, Inc., TA-T-18,332	Temporary common carrier authority over irregular routes extended to 1/28/69. Effective 11/1/68.	Parris, Thomas	See Welschmeyer, Martin J.
Moyer Truck Line, Inc., TA-T-18,332	Temporary common carrier authority extended to 9/25/69. Effective 6/30/69.	Parrish, H.C., Truck Service, T-24,225	Additional common carrier authority granted. Effective 12/24/68.
Moyer Truck Line, Inc., T-18,332	Transferred and retired entire common carrier authority under T-15,404, from Kelly R. Marsh to Moyer Truck Line, Inc., and merged with T-18,332. Effective 2/8/69.	Parrott, Bill, T-20,365 Sub 1	Granted common carrier authority over irregular route. Effective 7/1/69.
Musselman & Hall	See Musselman & Hall Contractors, Inc.	Patterson, O. J. and Gerald Dean Patterson Patterson Transport, Inc., T-20,087	See Patterson Transport, Inc. Transferred common carrier authority from O. J. Patterson and Gerald Dean Patterson to Patterson Transport, Inc. Effective 1/17/69.
Musselman & Hall Contractors, Inc., T-14,867	Transferred common carrier authority from Musselman & Hall to Musselman & Hall Contractors, Inc. Effective 9/9/68.	Percy, William H., T-13,293	Transferred common carrier authority from Paul C. Thompson to William H. Percy. Effective 3/23/69.
Nanney, Eugene, T-21,996 Sub 1	Granted common carrier authority over irregular route. Effective 4/29/69.	Perkins, Harold, T-13,309	Application to transfer certificate of convenience and necessity from H & Z Trucking to Harold Perkins. Pending.
Nelson Tree & Landscaping Service, T-27,386	Application for common carrier authority over irregular route. Pending.	Perrine, Duane	See Perrine & Gamm Trucking Service
Nichols, William D., T-13,206	Transferred common carrier authority from A. D. Brown to William D. Nichols. Effective 10/5/68.	Perrine & Gamm Trucking Service,	Transferred common carrier authority from Duane Perrine to Duane Perrine and Grover Gamm, d/b/a Perrine & Gamm Trucking Service. Effective 4/25/69.
Niedergerke Truck Line, T-6739 Sub 1	Application for common carrier authority over irregular route. Pending.	Perry, Harvey E.	See Specialty Transit Co., Inc.
Naylor, Cordie, T-13,300	Transferred all authority under T-4080, Frank B. Van Dyke, to Cordie Naylor. Effective 12/13/68.	Phelps Drayage Co., T-22,734-X	Contract carrier authority revoked 11/22/68.
Oder, Larry, TA-T-27,021	Temporary common carrier authority extended to 4/17/69. Effective 2/19/69.	Philipp Transit Lines, Inc., T-419	Temporary authority extended to 11/14/68. Effective 8/15/68.
Oldham, J. H., Concrete Co.	See Oldham, Earl G.	Philipp Transit Lines, Inc., T-419	Temporary authority extended to 12/3/68. Effective 8/29/68.
Oldham, Earl G., T-18,307	Transferred common carrier authority from J. H. Oldham Concrete Co. to Earl G. Oldham. Effective 1/1/69.	Phillips, Clettis	See Chancey, Bobby Don
Oliver, James S., TA-B-25,762 (Cert. 739)	Temporary authority extended to 1/3/69. Effective 10/3/68.	Pioneer Hauling Co., Inc., T-19,212	Application to transfer certificate of convenience and necessity from Jordan Hauling Co. to Pioneer Hauling Co. Inc. Pending.
Oliver, James S., B-25,762 Sub 1	Granted additional authority for common carrier over regular route. Effective 12/19/68.	Polley, Keith H., T-27,359	Application to transfer a portion of the common carrier authority granted to E. G. Schroff under T-15,792 to Keith H. Polley. Pending.
Oliver, John F., Inc., T-26,620	Transferred a portion of common carrier authority from John F. Oliver to John F. Oliver, Inc. Effective 9/8/68.	Prairie Milling Co.	See Woodson Trucking Service.
Orscheln Brothers Truck Lines, Inc.	See Scherff's Truck Lines, Inc.	Presley, L. C.	See Adams, Wallas
Otten Truck Line, T-12,567	Retired and transferred T-1,553 from A. T. Meyer to Otten Truck Line, and merged with T-12,567. Effective 3/20/69.	Proctor, Wilbert Earl	See Boyce, Larry
		Provence, Luther L., T-14,113	Transferred common carrier authority from Donald D. Snodgrass to Luther L. Provence. Effective 3/31/69.
		Q & R Motor Service, Co., T-8,542 Sub 2	Additional common carrier authority over irregular route granted. Effective 9/20/68.

Q & R Motor Service, Co., Sub 3	Granted additional common carrier authority over irregular route granted. Effective 3/27/69.	Richmond, Arthur E., T-26,604	Granted common carrier authority. Effective 1/14/69.
Q & R Motor Service, Co., TA-T-8,542	Temporary common carrier authority extended to 10/10/68. Effective 7/19/68.	Riechard, Jack, T-26,424-X	Contract carrier authority over irregular route granted. Effective 2/18/69.
Q & R Motor Service, Co., TA-T-8,542	Temporary common carrier authority over irregular route extended to 4/3/69. Effective 1/2/69.	Riechard, Jack, TA-T-26,424-X	Temporary contract carrier authority extended to 5/1/69. Effective 1/31/69.
Q & R Motor Service, Co., TA-T-8,542	Temporary common carrier authority over irregular route extended to 12/27/68. Effective 9/30/68.	Righter Trucking Co., Inc., T-1379 Sub 2	Application for common carrier authority over regular route. Dismissed 11/1/68.
Q & R Motor Service, Co., TA-T-8,542	Granted temporary common carrier authority over irregular route. Effective 10/15/68.	Riley, Luther Wayne, Cert. T-23,466	Transferred common carrier authority from Thomas Wm. Batterton, Jr., to Luther Wayne Riley. Effective 12/2/68.
Rackers, Andrew C.	See Bisges, Mrs. Leo	Rittman Bros.	See Trams, Claude A.
Railway Express Agency, Inc., T-12,231 Sub 9	Order Denying Stay of Order and/or Further Proceedings for authority granted 9/27/66. Effective 3/25/69.	Roach, K. W., & Son, T-23,863	Transferred common carrier authority from Harold G. Burnett to K. W. Roach & Son. Effective 4/18/69.
Railway Express Agency, Inc., Sub 11	Application for common carrier authority over regular route. Pending.	Rogers Cartage Co., T-9073 Sub 8	Granted additional authority. Effective 12/19/68.
Railway Express Agency, Inc., TA-T-12,231	Temporary authority for general commodities over regular route extended to 4/3/69. Effective 1/3/69.	Rogers Cartage Co., Sub 9	Granted additional authority. Effective 3/25/69.
Railway Express Agency, Inc., TA-T-12,231	Application for temporary authority dismissed 7/23/68.	Rogers Cartage Co., Sub 10	Application for additional authority dismissed 1/28/69.
Rand Enterprises, T-27,346	Application for common carrier authority over irregular route. Pending.	Rogers Cartage Co., Sub 11	Granted additional authority. Effective 6/3/69.
R & K Truck Company	See R & S Truck Company	Rogers Cartage Co., TA-T-9073	Granted temporary authority until 7/31/69. Effective 5/6/69.
R & L Truck Line, T-262	Transferred common carrier authority from Richard D. Ezell and Larry D. Goerke, d/b/a R & L Truck Line, to Richard D. Ezell and Evelyn E. Ezell, d/b/a R & L Truck Line. Effective 8/15/68.	Ruan Transport Corp., T-10,742 Sub 17	Common carrier authority over irregular route granted. Effective 10-24-68.
R & L Truck Line, T-262	Application to transfer common carrier authority from R & L Truck Line to Lawson Equipment, Inc. Pending.	Ruan Transport Corp., T-10,742 Sub 18	Additional common carrier authority over irregular routes granted. Effective 3/18/69.
R & S Truck Co., T-14,163	Transferred common carrier authority from R & K Truck Co. to R & S Truck Co. Effective 5/5/69.	Ruan Transport Corp., T-10,742 Sub 19	Application for common carrier authority over irregular routes. Pending.
Ray, Snowden L., T-13,115	Transferred common carrier authority over irregular route from Leslie Anderson to Snowden L. Ray. Effective 12/28/68.	Ruan Transport Corp., T-10,742 Sub 20	Application for common carrier authority over irregular routes. Order of Consolidation effective 1/10/69. Pending.
Reed, Glenn C.	See Jackson Quarries, Inc.	Ruan Transport Corp., T-10,742 Sub 21	Granted additional common carrier authority over irregular routes. Effective 6/3/69.
Reynolds, C. E., Transport, Inc., TA-T-11,962	Temporary authority extended to 10/10/68. Effective 7/16/68.	Ruan Transport Corp., TA-T-10,742	Temporary common carrier authority extended to 9/4/69. Effective 6/19/69.
Reynolds, C. E., Transport, Inc., TA-T-11,962 Sub 7	Common carrier authority granted effective 7/26/68.	Ruan Transport Corp., TA-T-10,742	Temporary common carrier authority extended to 6/4/69. Effective 3/7/69.
Reynolds, C. E., Transport, Inc., TA-T-11,962 Sub 10	Application for additional common carrier authority. Pending.	Ruan Transport Corp., T-19,910-X Sub 4	Additional contract carrier authority to operate over irregular route granted. Effective 10/24/68.
Reynolds, C. E., Transport, Inc., TA-T-11,962	Application for common carrier authority over irregular route extended to 7/24/69. Effective 4/28/69.	Ruan Transport Corp., T-19,910-X Sub 5	Additional contract carrier authority to operate over irregular route granted. Effective 12/6/68.
Rice, Kenneth H., T-13,136	Transferred common carrier authority from D & R Hauling to Kenneth H. Rice. Effective 3/22/69.	Ruan Transport Corp., TA-T-19,910-X	Temporary contract carrier authority extended to 10/24/68. Effective 7/29/68.

St. Francois Ambulance Service, Inc. TA-A-26,632	Granted temporary common carrier authority over irregular route, extended to 5/8/69. Effective 2/10/69.	Sheets, William C., T-13,834	Transferred certificate of convenience and necessity from Claude E. Davis to William C. Sheets. Effective 10/19/68.
St. Francois Ambulance Service A-2	Granted permanent common carrier authority over irregular route. Effective 3/14/69.	Shipman, Lamon	See Bottoms, Charles
St. Louis-Cape Bus Line	See St. Louis-Cape Bus Line, Inc.	Shores, G. C., T-26,646	Granted common carrier authority. Effective 1/14/69.
St. Louis-Cape Bus Line, Inc., B-8718	Common carrier authority under Cert. and Permit 374 transferred from St. Louis-Cape Bus Line to St. Louis-Cape Bus Line, Inc. Effective 7/1/68.	Silex Elevator, T-8699	Application transfer certificate of convenience and necessity from Dwyer Motor Freight to Silex Elevator. Pending.
St. Louis-Cape Bus Line, Inc., B-8718 Sub 1	Granted common carrier authority over regular route. Effective 6/3/69.	Simmons, E. C.	See Simons Trucking Co.
St. Louis-Cape Bus Line, Inc., B-8718 Sub 2	Granted common carrier authority over regular route. Effective 6/3/69.	Simmons Trucking Co., T-13,379	Transferred common carrier authority from E. C. Simmons to Simmons Trucking Co. Effective 12/7/68.
Sandhaus, Harold M., T-12,212 Sub 7	Granted common carrier authority over irregular route. Effective 7/8/69.	Slater and Fowles, Inc.	See Mo. Agricultural Enterprises, Inc.
S & J Trucking Co., Cert. T-20,260	Transferred common carrier authority from Kenneth E. Johnson to S & J Trucking Co. Effective 3/8/69.	Smart & Crenshaw, T-25,465	Transferred all authority under T-3355 from Earl Estes to Smart & Crenshaw and merged with T-25,465. Effective 8/8/68.
Saline County Truck Co.	See Bentley, Ernest	Snodgrass, Donald D.	See Provence, Luther L.
Samson, Hartford, Cert. T-25,681	Transferred common carrier authority from Lewis H. Sowards to Hartford Samson. Effective 10/6/68.	Southern Missouri Freight	See Southern Missouri Freight, Inc.
Savannah Excavating, T-27,340	Application for common carrier authority over irregular route. Pending.	Southern Missouri Freight, Inc. T-25,449	Transferred common carrier authority from Southern Missouri Freight to Southern Missouri Freight, Inc. Effective 1/26/69.
School Bus Service, Inc., TA-B-26,751 (Cert. 757-X)	Temporary contract carrier authority extended to 3/19/69. Effective 12/2/68.	Southern-Plaza Express, Inc.	See Consolidated Freightways Corp.
School Bus Service, Inc., B-26,751-X	Granted contract carrier authority over regular route. Effective 3/11/69.	Sowards, Lewis H.	See Samson, Hartford
Scheriff's Truck Lines, Inc., T-7 Sub 1	Motion to extend common carrier authority on permanent basis denied 9/10/68.	Spalding, Lois R., T-22,392	Transferred common carrier authority from Scott City Grain Co., Inc. to Lois R. Spalding. Effective 12/21/68.
Scheriff's Truck Lines, Inc., T-7	Portion of common carrier authority granted in T-403 transferred from Orscheln Bros. Truck Lines, Inc., to Scheriff's Truck Lines, Inc., and merged with T-7. Effective 8/6/68.	Sparks, Borden	See Adams, Curtis
Schlemper, Edmund H., Cert. T-13,189	Transferred common carrier authority from L. A. Bailey to Edmund H. Schlemper. Effective 9/13/68.	Speciality Transit Co., Inc., TA-B-18,206-X	Temporary authority extended to 9/30/68. Effective 7/1/68.
Schmidt, Estel	See William Hassier Materials Co.	Speciality Transit Co., Inc., B-25,705	Retired and transferred common carrier authority under Cert. 737 from Harvey E. Perry to Speciality Transit Co. Effective 12/15/68.
Schott, Leo Curtis, Jr., T-24,846-X	Transferred contract carrier authority from Richard Irwin to Leo Curtis Schott, Jr. Effective 3/23/69.	Speciality Transit Co., Inc., B-26,435 Sub 1	Granted additional common carrier authority over irregular route. Effective 12/17/68.
Schroff, E. G.	See Polley, Keith H.	Speciality Transit Co., Inc., B-26,435	Granted common carrier authority over regular route. Effective 9/10/68.
Schwent, John H., T-26,774	Granted common carrier authority. Effective 2/4/69.	Speciality Transit Co., Inc.,	Contract carrier Permit 610-X canceled. Effective 9/27/68.
Schwerman Trucking Co., T-21,509 Sub 8	Application for common carrier authority over irregular route. Pending.	Spectro Freight System, Inc., T-11,560	Transferred authority from Viking Freight Co. To Spector Freight System, Inc., retired T-1772 and merged with T-11,560. Effective July 8, 1968.
Scott City Grain Co., Inc.	See Spalding, Lois R.	Speedy Transfer	See Bartow Van Lines, Inc.
Seifner, Donald, T-15,626	Transferred common carrier authority from Doogs & Stuart Trucking to Donald Seifner. Effective 2/21/69.	Stanley, Charles	See Matthews, Berline
		Staton, Bob, Transport Co., TA-T-16,666	Application filed 4/7/69 for temporary carrier authority over irregular route. Extended to October 1, 1969.
		Staton, Bob, Transport Co., T-16,666 Sub 9	Application filed 4/11/69 for common carrier authority over irregular route. Pending.

Steel Haulers, Inc., T-5226-X	Temporary authority extended to 7/31/69. Effective 5/5/69.	Terrell Trucking Service, T-13,773 Sub 1	Common carrier authority granted over irregular route. Effective 10/1/68.
Steva Stone Co., Inc., T-15,579	Transferred authority from David King to Steva Stone Co., Inc. Effective 6/24/69.	Terrell Trucking Service, TA-T-13,773	Temporary common carrier authority extended to 10/24/68. Effective 9/24/68.
Stewart Motor Freight Co., Inc., TA-T-20,524	Application for temporary authority denied 3/25/69.	Thoele Coal & Hauling Co.	See Thoele Coal, Oil & Hauling Co., Inc.
Swarenger, Eddy N., T-13,632	Transferred common carrier authority from Curtis Lee Hodge to Eddy N. Swarenger. Effective 7/25/68.	Thoele Coal, Oil & Hauling Co., Inc., T-14,151	Transferred common carrier authority from Thoele Coal & Hauling Co. to Thoele Coal, Oil & Hauling Co., Inc. Effective 2/2/69.
Teeter, Troy, Cert. T-13,823	Transferred common carrier authority from Otto Cobb to Troy Teeter. Effective 6/8/69.	Thomas Supreme Service, T-2,935	Transferred common carrier authority from Lupkey Supreme Service to Thomas Supreme Service. Effective 8/27/68.
Trams, Claude A., T-12,832	Transferred common carrier authority from Rittman Bros. to Claude A. Trams. Effective 3/29/69.	Thompkins, Earl, T-26,577	Granted common carrier authority over irregular route. Effective 10/3/68.
Transcontinental Bus System, Inc.	See Continental Trailways, Inc.	Thompkins, Earl, TA-T-26,577	Temporary authority over irregular route extended to 11/6/68. Effective 8/9/68.
Tri-County Oil Co., T-26,773-X	Granted contract carrier authority. Effective 5/5/69.	Thompson, H. L., T-14,523	Transferred common carrier authority from Downes Truck Service to H. L. Thompson. Effective 12/23/68.
Triangle Truck Line, Inc., T-21,770	Transferred authority from Triangle Transfer Co. to Triangle Truck Line, Inc. Effective 7/1/68.	Thompson, Paul C.	See Percy, William H.
Triangle Transfer Co.	See Triangle Truck Line, Inc.	Thompson, Roy	See Jones, Monroe
Truck Transport, Inc., T-12,151 Sub 26	Application for common carrier authority over irregular route. Pending.	Thompson, Roy	Granted common carrier authority. Effective 2/4/69.
True, Eugene	See Crawford, Ray	Thurman, Ronald L.	See Central Truck Service
Tucker, L. A., Truck Lines, T-70 Sub 2	Granted additional common carrier authority. Effective 10/10/68.	T. I. M. E. Freight, Inc.	See Beaufort Transfer Co.
Tucker, L. A. Truck Lines, Sub 3	Granted common carrier authority. Effective 12/20/68.	Todd, Lloyd D.	See Worley, Edward
Tucker, L. A. Truck Lines, TA-T-70	Temporary authority extended until 12/27/68. Effective 9/27/68.	Top Transfer Co., T-26,391-X	Granted contract carrier authority over irregular route. Effective 12/12/68.
Tully, Harry	See Garnett, Columbus Jr.	Top Transfer Co., TA-T-26,391-X	Temporary authority extended to 1/28/69. Effective 10/30/68.
Tune, J. J.	See Dodds Truck Line, Inc.	Torbit, Edwin E.	See Barrett, Wayne C.
Twehous Excavating Co., Inc., T-13110	Transferred common carrier authority from John's Construction Co. to Twehous Excavating Co., Inc. Effective 12/30/68.	Weir, Lester O., T-25,025	Transferred all common carrier authority from James W. Edwards to Lester O. Weir. Effective 8/22/68.
Twin City Transfer	See Barlow Van Lines, Inc.	Wells, Melvin, T-27,004	Application for common carrier authority over irregular route. Pending.
Underwood, C. O.	See Hackstadt, M. W.	Welschmeyer, Martin J., T-13,378	Transferred common carrier authority from Thomas Parris to Martin J. Welschmeyer. Effective 6/5/69.
Vawter Brothers Garage, T-26,612	Application for common carrier authority over irregular route dismissed 11/4/68.	Wiechert, Orville, T-14,008	Transferred common carrier authority from George I. Burks to Orville Wiechert. Effective 12/28/68.
Vawter Brothers Garage, TA-T-26,612	Application for temporary common carrier authority over irregular route dismissed 8/26/68.	Wilkinson, Paul T.	See Bumgarner, James L.
Viking Freight Co.	See Spector Freight System, Inc.	Wilson, Robert Eugene, T-13,398	Transferred common carrier authority from M. E. Kemerling to Robert Eugene Wilson. Effective 2/10/69.
V-K Bus Lines, Inc., BA-11,849 Sub 1	Application for common carrier authority over regular route dismissed 11/15/68.	Wilson, Willard D.	See Adams, J. T.
Waller Truck Co., T-8768 Sub 2	Application for common carrier authority over irregular route. Pending.	Wiseman, James R., T-14,385	Transferred common carrier authority from Kenneth Fleener to James R. Wiseman. Effective 2/16/69.
W & B Trucking Co.	See Riley, Luther Wayne		
Waterman, Andy, T-27,081	Application for common carrier authority over irregular route. Pending.		

Witte Brothers Exchange, Inc., T-27,387	Transferred portion of authority under T-12,821, from Thomas Moore Truck Line and merge with T-17,189 Witte Brothers Exchange, Inc. Effective 6/28/69.	Worley, Edward, T-15,734	Transferred common carrier authority from Lloyd D. Todd to Edward Worley. Effective 6/23/69.
Woodson Trucking Service, T-21,309	T-25,589 retired, authority transferred from Prairie Milling Co. to Woodson Trucking Service and merged under T-21,309. Effective 6/29/69.	Wright, David H., T-27,079	Granted common carrier authority. Effective 5/13/69.
		Wright, Sam (Irene J.) Mrs.	See Howard Construction Co.
		York, Floyd, T-13,961	Transferred common carrier authority from Earl London to Floyd York. Effective 10/12/68.

Railroad

NAME AND NUMBER	SUBJECT AND DISPOSITION	NAME AND NUMBER	SUBJECT AND DISPOSITION
Atchison, Topeka & Santa Fe Railway Company, 16,501	Granted permission to discontinue open agency station at Bosworth. Effective 7/1/69.	Missouri Pacific Railroad Co., 16,467	Authority granted to establish and maintain its mobile agency plan on a trial basis for a period of one year. Effective 2/4/69.
Atchison, Topeka & Santa Fe Railway Company, 16,528	Ordered to cancel Supplement No. 1 and Resuspension Supplement No. 3 and retain in effect the present rates on milk, cream and related products. Effective 3/25/69.	Norfolk & Western Railway Co., 16,323	Supplemental application filed requesting discontinuance of trains Nos. 209 & 210 and branch line trains Nos. 32, 33, 34 & 37 granted. Effective 4/18/69.
Atchison, Topeka & Santa Fe Railway Company, 16,613	Authority granted to discontinue services of an agent at its station in Bucklin. Effective 5/2/69.	Norfolk & Western Railway Co., 16,523	Investigation of alleged violations of passenger tariff rules is discontinued. Effective 8/6/68.
Atchison, Topeka & Santa Fe Railway Company, 16,614	Authority denied to discontinue the services of an agent at its station in Mendon. Effective 6/13/69.	Norfolk & Western Railway Co., 16,744	Application for authority to close its agency station at Huntsville. Pending.
Chicago, Burlington & Quincy Railroad Company, 16,622	Authority granted to discontinue the services of an agent at its station in Parkville. Effective 2/27/69.	Norfolk & Western Railway Co., 16,745	Application for authority to close the agency stations at Queen City and Green Top. Pending.
Chicago, Burlington & Quincy Railroad Company, 16,664	Interim authority granted to establish a mobile agency with base or reporting station located at Old Monroe. Effective 4/18/69.	Norfolk & Western Railway Co., 16,759	Application for permission to close the agency stations at Sturgeon and Hallsville. Pending.
Chicago, Burlington & Quincy Railroad Company, 16,743	Application for authority to establish mobile agency with base or reporting station in Chillicothe. Pending.	Railroad Regulations, 16,336	Discontinued investigation of proposed increases in linehaul and switching charges for cement and cement rock. Effective 9/18/68.
Gulf, Mobile & Ohio Railroad Company, 16,534	Authority granted to discontinue the services of an agent at its station in Armstrong and to dismantle and remove its station building from location. Effective 10/29/68.	Railroad Regulations, 16,640	Ordered investigation of proposed increases in freight rates and charges. Pending.
Kansas City Public Service Freight Operation, 16,596 & 16,605	Complaints by Missouri Portland Cement Company and the City of Kansas City with respect to the embargo of service put into effect by Kansas City Public Service Freight Operation are dismissed. Effective 12/31/68.	Railroad Regulations, 16,710	Ordered investigation of proposed increases in linehaul rates and charges on hydraulic cement and switching rates and charges on hydraulic cement and cement rock within St. Louis switching district. Pending.
Missouri-Kansas-Texas Railroad Co., 16,501	Authority granted to discontinue the services of an agent at its station in Moberly and to dismantle and remove its station structure. Effective 3/4/69.	Railroad Regulations, 16,770	Ordered investigation of proposed charge for first holding of grain cars for inspection and sampling. Pending.
Missouri-Kansas-Texas Railroad Co., 16,625	Authority granted to dismantle and dispose of the public building previously used as its freight station in Boonville. Effective 6/17/69.	Railway Express Agency, Inc., 16,486	Investigation of the closing of the agencies at Hayti, Caruthersville, Steele and Kennett is discontinued. Effective 12/19/68.
Missouri Pacific Railroad Co., 16,305	Application to discontinue passenger trains Nos. 14, 15, 16 & 17 between St. Louis and Kansas City is denied. Effective 9/10/68.	Railway Express Agency, Inc., 16,487	The investigation of the closing of the agencies at Rock Port and Langdon is discontinued. Effective 5/13/69.
Missouri Pacific Railroad Co., 16,351	Application for permission to close its station at Potosi. Pending.	Railway Express Agency, Inc., 16,510	Investigation of the closing of the agency at Dexter is dismissed. Effective 3/28/69.
Missouri Pacific Railroad Co., 16,390	Application to discontinue passenger trains Nos. 14, 15, 16, & 17 between St. Louis and Kansas City is denied. Effective 9/10/68.	St. Louis-San Francisco Railway Co., 16,272	St. Louis-San Francisco Railway Company and St. Louis Southwestern Railway Company are denied authority to discontinue the agency station at Campbell. Effective 12/13/68.
		St. Louis-San Francisco Railway Co., 16,527	Allowed to discontinue its agency station at Wittenberg. Effective 2/4/69.

St. Louis-San Francisco Railway Co., 16,535	Granted authority to discontinue the dualized stations at Lowry City and Osceola. Effective 11/8/68.	St. Louis Southwestern Railway Co., 16,562	Authorized to discontinue the services of an agent at its station in Delta. Effective 4/11/69.
St. Louis Southwestern Railway Co., 16,272	See St. Louis-San Francisco Railway Company.		
St. Louis Southwestern Railway Co., 16,484	Denied authority to discontinue agency station in Caruthersville. Effective 8/20/68.	St. Louis Southwestern Railway Co., 16,767	Investigation of the closing of the railroad station in Bernie. Pending.

Railroad Safety

NAME AND NUMBER	SUBJECT AND DISPOSITION	NAME AND NUMBER	SUBJECT AND DISPOSITION
Anheuser-Busch, Inc., 16,702	Authority granted to construct a railroad spur track with substandard clearance. Effective 2/28/69.	Chicago, Burlington & Quincy Railroad Company, 16,751	Authority granted to State Highway Commission in cooperation with the railroad to install flashing light signals at a grade crossing on Route A, Atchison County. Effective 6/12/69.
Atchison, Topeka & Santa Fe Railway Company, 16,488	Complaint by the City of Marceline alleging substandard conditions of grade crossing is dismissed. Effective 9/4/68.	Chicago, Great Western Railway Co. (Chicago & North Western Railway Co.), 16,333	Authority granted to the City of St. Joseph in cooperation with the railroad to construct a bridge at the intersection of Fifth Avenue and the tracks. Effective 1/28/69.
Atchison, Topeka & Santa Fe Railway 16,706	Authority granted to operate a shifted load detector between Bosworth and Dean Lake. Effective 3/29/69.	Chicago, Great Western Railway Co. (Chicago & North Western Railway Co.), 16,677	Ordered to remove brush on right-of-way which obstructed motorists' vision on Route C, Andrew County. Effective 6/12/69.
Chicago, Burlington & Quincy Railroad Company, 16,475	Authority granted to State Highway Commission in cooperation with the railroad to relocate an existing grade crossing. Effective 8/2/68 and a Modifying Order effective 10/10/68.	Chicago, Milwaukee, St. Paul & Pacific Railroad Co., 16,687	Authority granted to State Highway Commission in cooperation with the Chicago, Milwaukee, St. Paul & Pacific Railroad Company and Chicago, Rock Island & Pacific Railroad Company to construct an overpass grade separation on Route 210, Clay County. Effective 4/19/69.
Chicago, Burlington & Quincy Railroad Company, 16,505	Chicago, Burlington & Quincy Railroad Company and the Chicago, Rock Island & Pacific Railroad Company vs. City of St. Joseph regarding the installation of flashing light signals at the crossing of Illinois Avenue. Pending.	Chicago, Milwaukee, St. Paul & Pacific Railroad Co., 16,721	See Chicago, Rock Island & Pacific Railroad Company.
Chicago, Burlington & Quincy Railroad Company, 16,547	Authorized to construct a box car cleaning facility at its North Kansas City yards, with less than prescribed standard clearance. Effective 8/6/68.	Chicago, Rock Island & Pacific Railroad Co., 16,244	Ordered to install a flashing light signal at Olive Street Road, Chesterfield, St. Louis County. Effective 7/3/69.
Chicago, Burlington & Quincy Railroad Company, 16,610	Application for authority to remove three main tracks at the approach to the Hannibal Bridge in Kansas City. Pending.	Chicago, Rock Island & Pacific Railroad Co., 16,265	Permitted to maintain reflectorized switch stand targets at certain switches on the Missouri-Kansas Division of the Railroad. Effective 9/20/68.
Chicago, Burlington & Quincy Railroad Company, 16,651	Authority granted to St. Louis County and the railroad to raise the vertical clearance over Trampe Avenue. Effective 1/2/69.	Chicago, Rock Island & Pacific Railroad Co., 16,300	Ordered to install flashing light signals on Adie Road, Maryland Heights, St. Louis County. Effective 7/1/69.
Chicago, Burlington & Quincy Railroad Company, 16,695	Application by the City of St. Joseph and Chamber of Commerce for an order directing the installation of an automatic flashing light signal at the intersection of Leonard Road and the tracks of the railroad. Pending.	Chicago, Rock Island & Pacific Railroad Co., 16,466	In regard to complaint filed by 60 residents of Argyle, Osage County, the State Highway Commission in cooperation with the railroad is authorized to install flashing light signal where Highway "T" crosses tracks. Effective 12/31/68.
Chicago, Burlington & Quincy Railroad Company, 16,720	Authority granted to State Highway Commission in cooperation with the railroad to construct a dual overpass grade separation on Route 210, Clay County. Effective 7/1/69.	Chicago, Rock Island & Pacific Railroad Co., 16,505	See Chicago, Burlington & Quincy Railroad Company.
Chicago, Burlington & Quincy Railroad Company, 16,733	Authority granted to State Highway Commission in cooperation with railroad to relocate a grade crossing on relocated Route B (202) Schuyler County. Effective 6/12/69.	Chicago, Rock Island & Pacific Railroad Co., 16,540	Authority granted to State Highway Commission in cooperation with the railroad to construct an overpass grade separation structure on Route H, Daviess County. Effective 9/11/68.
Chicago, Burlington & Quincy Railroad Company, 16,747	Authority granted to State Highway Commission in cooperation with the railroad to construct an overhead grade separation on Route E (159), Holt County. Effective 7/3/69.	Chicago, Rock Island & Pacific Railroad Co., 16,606	Complaint filed 9/17/68 by the City of Raytown for the replacement and maintenance of the Raytown Road Railroad Bridge at 65th Street over the tracks of the railroad company. Pending.
		Chicago, Rock Island & Pacific Railroad Co., 16,687	See Chicago, Milwaukee, St. Paul and Pacific Railroad Company.

Chicago, Rock Island & Pacific Railroad Co., 16,711	Authority granted to State Highway Commission in cooperation with the railroad to replace dual overhead grade separation on Route 71 BP, Jackson County. Effective 6/4/69.	Missouri-Illinois Railroad Co., 16,604	Authority granted to State Highway Commission in cooperation with the railroad to construct dual overpass grade separation structures on Interstate Route 55 and establish a new grade crossing for a parallel service road in Jefferson County. Effective 10/31/68.
Chicago, Rock Island & Pacific Railroad Co., 16,721	Authority granted to State Highway Commission in cooperation with Chicago, Rock Island & Pacific Railroad Company and Chicago, Milwaukee, St. Paul & Pacific Railroad Company to construct an overhead grade separation on Route 71 BP, Clay County. Effective 6/27/69.	Missouri-Illinois Railroad Co., 16,675	Authority granted to State Highway Commission in cooperation with the railroad to construct an overhead grade separation on Route 67, St. Francois County. Effective 4/8/69.
Chicago, Rock Island & Pacific Railroad Co., 16,724	Authority granted to St. Louis County and the Chicago, Rock Island & Pacific Railroad Company to reconstruct and widen a public road crossing at the intersection of Water Works Road, St. Louis County. Effective 4/11/69.	Missouri-Illinois Railroad Co., 16,686	Authority granted to State Highway Commission in cooperation with the railroad to construct a dual overpass grade separation on Interstate Route 55, Ste. Genevieve County. Effective 3/15/69.
Chicago, Rock Island & Pacific Railroad Co., 16,742	State Highway Commission vs. the railroad to establish a new grade crossing and install flashing light signals on Route Y, Miller County. Pending.	Missouri-Kansas-Texas Railroad Co., 16,504	Authority granted the State Highway Commission in cooperation with the railroad to install flashing light signals at grade crossing where Route C (94) crosses the tracks. Effective 10/22/68.
Gulf, Mobile & Ohio Railroad Co., 16,260	Ordered to install flashing light signals at a grade crossing on Route AA, Audrain County. Effective 12/27/68.	Missouri-Kansas-Texas Railroad Co., 16,537	City Wide Maintenance Company, Inc. granted authority to continue to operate an existing substandard clearance caused by the west wall of 1627 West 31st Street, Kansas City. Company is required to erect a warning sign for the railroad employees. Effective 10/8/68.
Gulf, Mobile & Ohio Railroad Co., 16,568	See Kansas City Terminal Railway Company.	Missouri-Kansas-Texas Railroad Co., 16,609	Complaint by 370 citizens in Henry County. Railroad authorized to install automatic flashing light signals at the crossing of its tracks and County Route HH near 5th Avenue in Montrose. Effective 4/22/69.
Kansas City Southern Railway Co., 16,091	Authority granted State Highway Commission in cooperation with the railroad to construct an underpass grade separation on Interstate Route 435 in Jackson County. Effective 8/13/68.	Missouri-Kansas-Texas Railroad Co., 16,644	Authority granted to State Highway Commission in cooperation with the railroad to construct an overpass grade separation on Route 71, Vernon County. Effective 1/18/69.
Kansas City Southern Railway Co., 16,496	Authority granted State Highway Commission in cooperation with the railroad to construct an overpass grade separation on Route D, Cass County. Effective 7/10/68.	Missouri-Kansas-Texas Railroad Co., 16,650	Application for permission to substitute reflectorized targets for oil burning switch lamps on all main and branch lines. Pending.
Kansas City Southern Railway Co., 16,661	Joint application by Glaser Products Corp. and the railroad for authority to operate an overhead crane over switch track, which in operation has less than statutory vertical clearance, and for authority to maintain overhead door entryway that when closed has less than statutory vertical clearance. Pending.	Missouri-Kansas-Texas Railroad Co., 16,680	Authority granted to State Highway Commission in cooperation with the railroad to replace overhead grade separation on Route J, Henry County. Effective 5/16/69.
Kansas City Southern Railway Co., 16,719	Authority granted to Jackson County Highway Department in cooperation with the railroad to construct an underpass grade separation on 87th Street in Kansas City. Effective 4/8/69.	Missouri-Kansas-Texas Railroad Co., 16,749	Complaint submitted by 257 residents in Green Ridge regarding the safety of railroad at Highway 127. Pending.
Kansas City Terminal Railway Co., 16,568	Authority granted to the City of Kansas City to construct a grade crossing over rights-of-way of Kansas City Terminal Railway Company, Gulf, Mobile and Ohio Railroad Company and Missouri Pacific Railroad Company on Northeast Industrial Trafficway in Kansas City. Effective 8/30/68.	Missouri Pacific Railroad Co., 14,489	Application filed by the City of Kansas City for an order authorizing a grade crossing on 74 St. Terrace. Pending.
Missouri-Illinois Railroad Co., 16,500	Authority granted State Highway Commission in cooperation with the railroad to relocate an existing grade crossing. Effective 8/3/68.	Missouri Pacific Railroad Co., 14,788	See St. Louis-San Francisco Railway Company.
		Missouri Pacific Railroad Co., 15,986	Authority granted the City of Independence in cooperation with the railroad to install flashing light signals at a grade crossing at Scott Street. Effective date pending.

Missouri Pacific Railroad Co., 16,392	Authority granted to install flashing light signals and gates where Rutger Street crosses the company's tracks in St. Louis. Effective 6/3/69.	Missouri Pacific Railroad Co., 16,691	Authority granted to State Highway Commission in cooperation with the railroad to construct a dual overpass grade separation on Route 71, Bates County. Effective 3/13/69.
Missouri Pacific Railroad Co., 16,393	Authority granted to install flashing light signals and gates where Sidney and Victor Streets cross the company's tracks in St. Louis. Effective 6/3/69.	Missouri Pacific Railroad Co., 16,692	Authority granted to State Highway Commission in cooperation with the railroad to construct a dual overpass grade separation on Route 71, Bates County. Effective 3/13/69.
Missouri Pacific Railroad Co., 16,394	Completion date for the installation of flashing light signals and gates at a grade crossing on Payne Street, Pacific, extended from 11/1/68 to 11/30/68.	Missouri Pacific Railroad Co., 16,717	Application for permission to install automatic flashing light signals at the intersection of Santa Fe Street and the railroad tracks in Kansas City. Pending.
Missouri Pacific Railroad Co., 16,419	Complaint filed by the City of Hollister and residents of Taney County. Railroad ordered to widen roadway for vehicle traffic underneath present railway trestle. Effective 7/8/69.	Missouri Pacific Railroad Co., 16,718	See Union Pacific Railroad Company.
Missouri Pacific Railroad Co., 16,517	Authority granted State Highway Commission in cooperation with the railroad to construct an overpass grade separation on Route 50, Johnson County. Effective 9/11/68.	Missouri Pacific Railroad Co., 16,731	Authority granted to State Highway Commission in cooperation with the railroad to construct a dual overpass grade separation for Interstate Route 44 in St. Louis. Effective 6/18/69.
Missouri Pacific Railroad Co., 16,541	Authority granted State Highway Commission in cooperation with the railroad to construct an overhead grade separation on Route A, Washington County. Effective 9/26/68.	Norfolk & Western Railway Co., 16,439	Authority granted State Highway Commission in cooperation with the railroad to construct a grade separation over a portion of Route 36, Macon County. Effective 8/6/68.
Missouri Pacific Railroad Co., 16,587	Authority granted to State Highway Commission in cooperation with the railroad to construct an overpass grade separation on Route W, Jackson County. Effective 11/14/68.	Norfolk & Western Railway Co., 16,519	Authority granted the City of LaPlata and the railroad to install automatic flashing light signals at Moore Street and to close the Bartlett Street and Colbern Street crossings. Effective 10/15/68.
Missouri Pacific Railroad Co., 16,568	See Kansas City Terminal Railway Company.	Norfolk & Western Railway Co., 16,688	Authority granted to State Highway Commission in cooperation with the railroad to install flashing light signals at a grade crossing where Highway Route B crosses the tracks in Boone County. Effective 3/4/69.
Missouri Pacific Railroad Co., 16,608	Application filed 9/19/68 and authority granted to Land Clearance for Redevelopment Authority of Lee's Summit in cooperation with the railroad to construct an underpass grade separation at Second Street in Lee's Summit. Effective 10/31/68.	Norfolk & Western Railway Co., 16,720	See Chicago, Burlington & Quincy Railroad Company.
Missouri Pacific Railroad Co., 16,646	Authority granted to State Highway Commission in cooperation with the railroad to construct a dual overpass grade separation on Route 71, Vernon County. Effective 1/29/69.	Norfolk & Western Railway Co., 16,765	Application by State Highway Commission for permission to relocate an existing public crossing and construct a dual overpass grade separation on Route 71 BP, Clay County, over the railroad's tracks. Pending.
Missouri Pacific Railroad Co., 16,666	Complaint filed by some 410 residents in Saline County regarding an unsafe crossing in the City of Nelson. Pending.	National Service Stations, Inc., 16,764	Authority granted to National Service Stations, Inc. to construct a railroad track with a clearance that will not conform to the uniform rules governing clearances. Effective 6/28/69.
Missouri Pacific Railroad Co., 16,678	Granted request for an Order rescinding the Commission's Order in Case No. 11,383 requiring Union Pacific Railway Company, Wabash Railroad Company, St. Louis-San Francisco Railway Company and Missouri Pacific Railway Company to maintain a flagman at 9th and Santa Fe Streets in Kansas City. Effective 6/13/69.	Railroad Regulations, 16,545	Modification of General Order 24. Pending.
Missouri Pacific Railroad Co., 16,679	Authority granted to operate a railroad switch track over and across State Street in Kansas City. Effective 6/12/69.	Railroad Regulations, 16,571	Investigation and suspension of increased charges and provisions for special equipment in cross-town switching movements discontinued. Railroads and their tariff agents granted permission to amend their affected tariff schedules. Effective 10/6/68.

Railroad Regulations, 16,616	General Order 49, pertaining to railroad protection standards, including material used, size of targets, clearing required, replacements required and type of lighting to be followed in substituting reflectorized targets for lighted switch lamp. Pending.	St. Louis-San Francisco Railway Co., 16,630	Authority granted to St. Louis County in cooperation with the railroad to construct a railroad bridge over Green Park Road. Effective 12/5/68.
Railroad Regulations, 16,628	Investigation to determine standard for signals and warning signs to be used at all grade crossings. Pending.	St. Louis-San Francisco Railway Co., 16,663	Authority granted to State Highway Commission in cooperation with the railroad to install flashing light signals at a grade crossing on Route 63, Howell County. Effective 1/1/69.
St. Louis-San Francisco Railway Co., 14,788	Complaint filed by City of Joplin requiring grade crossing over the tracks of St. Louis-San Francisco Railway Company and the Missouri Pacific Railroad Company. Effective date pending.	St. Louis-San Francisco Railway Co., 16,674	Authority granted to State Highway Commission in cooperation with the railroad to replace underpass grade separation on Route 63, Phelps County. Effective 1/29/69.
St. Louis-San Francisco Railway Co., 16,296	Authority granted State Highway Commission in cooperation with the railroad to install flashing light signals at a grade crossing in Scott County. Effective 12/26/68.	St. Louis-San Francisco Railway Co., 16,678 St. Louis-San Francisco Railway Co., 16,684	See Missouri Pacific Railroad Company. Authority granted to State Highway Commission in cooperation with the railroad to construct an overpass grade separation on Route 13 (160), Greene County. Effective 5/2/69.
St. Louis-San Francisco Railway Co., 16,442	Complaint filed by 126 residents of Strafford. Authority granted in cooperation with the railroad to install flashing light signals at the grade crossing where Washington Street crosses the company's tracks. Effective 5/13/69.	St. Louis-San Francisco Railway Co., 16,685	Authority granted to the State Highway Commission in cooperation with the railroad to construct a dual overpass grade separation on Interstate Route 44, St. Louis County. Effective 4/18/69.
St. Louis-San Francisco Railway Co., 16,456	Complaint filed by 138 residents and the County Court of Pulaski County regarding installation of flashing light signals at the intersection on Highway N. Pending.	St. Louis-San Francisco Railway Co., 16,698 St. Louis-San Francisco Railway Co., 16,700	Petition filed by 160 residents in Jasper County regarding a crossing. Pending. Authority granted for alteration of Interlocking Plant at Southeastern Junction, St. Louis. Effective 6/25/69.
St. Louis-San Francisco Railway Co., 16,491	Investigation of crossing between Highway 49 and a road formerly known as Forest Service Road No. 71. Pending.	St. Louis-San Francisco Railway Co., 16,737	Application by the City of Peculiar for a crossing over the tracks of the railroad in the city limits. Pending.
St. Louis-San Francisco Railway Co., 16,536	Authorized to remove certain flashing light grade crossing signals from the grade crossing of Elm Drive, Tenbrook, Jefferson County and install same at Wolf Hollow Road near Imperial. Effective 11/27/68.	St. Louis-San Francisco Railway Co., 16,752	Joint application filed 5/5/69 by St. Louis-San Francisco Railway Company and Southwest Truck Body Company for authority to maintain a spur track with less than standard clearance in Howell County. Pending.
St. Louis-San Francisco Railway Co., 16,542	Authority granted State Highway Commission in cooperation with the railroad for improvements of a portion of Interstate 44 in St. Louis County, within the city limits of Webster Groves and Oakland. Effective 10/3/68.	Southwest Truck Body Company, Inc. St. Louis Southwestern Railway Company, 16,730	See St. Louis-San Francisco Railway Company, 16,752. Authority granted to State Highway Commission in cooperation with the railroad to establish a new grade crossing with an automatic signal protection on U. S. Highway 61, New Madrid County. Effective 5/1/69.
St. Louis-San Francisco Railway Co., 16,549	Authority granted to install grade crossing on Jasper County Road No. 30. Effective 8/10/68.	Terminal Railroad Association of St. Louis, 16,681	Authority granted to Terminal Railroad Association of St. Louis to make revisions and effect remote control of the North Market Street interlocking plant. Effective 2/24/69.
St. Louis-San Francisco Railway Co., 16,570	Authority granted to operate flashing light signals on Red Bridge Road, Jackson County. Effective 9/12/68.	Union Electric Company, 16,623 and 16,624	Authority granted to construct a new grade crossing at Labadie, Franklin County. Effective 12/3/68.

Union Electric Company, 16,723

Authority granted to maintain reduced horizontal and vertical track clearances at Labadie plant. Effective 5/10/69.

Union Pacific Railway Company, 16,718

Joint application filed 3/10/69 by Union Pacific Railroad Company and Missouri Pacific Railroad Company for permission to install automatic flashing light signals at the intersection of Hickory-Union and Mulberry-St. Louis Streets in Kansas City. Pending.

Union Pacific Railway Company, 16,678

See Missouri Pacific Railroad Company.

Wabash Railroad Company, 16,678

Wabash Railroad Company, 16,720

See Missouri Pacific Railroad Company. See Chicago, Burlington & Quincy Railroad Company.

Public Utilities

NAME AND NUMBER	SUBJECT AND DISPOSITION	NAME AND NUMBER	SUBJECT AND DISPOSITION
Allied Telephone Company, 16,565	Authority granted to Triangle Telephone Co. to sell and Allied Telephone Co. to buy all of Triangle's common stock. Effective 9/20/68.	Bonfils Service Corp., 16,315	Authority granted to operate existing sanitary sewer system and to operate additional sewer facilities in St. Louis County. Effective 1/21/69.
Allied Telephone Company, 16,572, 16,573, 16,575	Authority granted to acquire more than 10% of the issued and outstanding common stock and 5% cumulative preferred stock of Stover Telephone Co. and to acquire more than 10% of the issued and outstanding common stock of Madison Telephone Co. and Swan Lake Telephone Company. Effective 9/20/68.	Burma Builders, 16,281	Application for authority to furnish sewer services as a public utility. Pending.
Arkansas-Missouri Power Co., 16,170	Set aside Order to reopen record. Effective 9/16/68.	Business Communications, Inc., 15,338	Supplemental application for additional non-interconnected paging service. Pending.
Arkansas-Missouri Power Co., 16,597	Authority granted to operate natural gas distribution facilities in Wayne County. Effective 11/13/68.	Business Communications, Inc., 16,607	Tariffs for a rate increase in the amount of \$12,528 for Domestic Land Mobile Radio Service to the customers of Business Communications, Inc. are dismissed. Effective 3/24/69.
Arkansas-Missouri Power Co., 16,652	Authority granted to operate an electric transmission line in Reynolds County. Effective 3/11/69.	Butler Hill Sewer Co., 16,314	Authority granted to operate a sewer system in St. Louis County. Effective 1/17/69.
Associated Natural Gas Co., 16,580	Authority granted to operate natural gas transmission and distribution facilities to serve Ripley County. Effective 11/7/68.	Butler Hill Sewer Co., 16,515	Authority granted to acquire through eminent domain proceedings rights of property necessary to operate a portion of sewer system. Effective 7/19/68.
Associated Natural Gas Co., 16,626	Authority granted to operate natural gas transmission facilities in Scott County. Effective 4/1/69.	Butler Hill Sewer Co., 16,676	Utilities Division of the PSC ordered to make an inventory and original cost appraisal of the sewer properties of the Butler Hill Sewer Co. Pending.
Associated Natural Gas Co., 16,627	Authority granted to operate natural gas transmission facilities in Cape Girardeau County. Effective 4/1/69.	Cape Communications Corp., 16,761	Application for authority to operate interconnected radio-land telephone service and non-interconnected paging service. Pending.
Associated Natural Gas Co., 16,754	Application to operate a natural gas transmission pipeline to serve Noranda Aluminum, Inc. in New Madrid County. Pending.	Capital City Telephone Co., 16,579	Authority granted to Capital City Telephone Co., St. Thomas Dial, Inc., and Madison Development Corp. to merge with Capital City Telephone as the surviving corporation. Effective 9/16/68.
Associated Natural Gas Co., 16,758	Application to operate a natural gas distribution system in Appleton City and Montrose and to interconnect with existing gas transmission pipeline. Pending.	Capital City Telephone Co., 16,598	Authority granted to Southwestern Bell Telephone Co. to sell and Capital City Telephone Co. to purchase toll switchboard and intertoll switching train facilities in Jefferson City. Effective 11/19/68.
Atlas Security Service, Inc., 16,478	Granted authority to operate an interconnected radio-land telephone service. Effective 8/6/68. Application for additional authority pending.	Capital City Telephone Co., 16,766	Authority granted to Southwestern Bell Telephone Co. to sell and Capital City Telephone Co. and United Telephone Co. to purchase certain private line tele-typewriter machines. Effective 6/30/69.
Bahn, William S. and Dorothy Ann Bahn, 15,772	See Water & Waste Utility Co.	Cat-Pac Lakes, Inc., 16,506	Application for authority to operate a water system in Franklin County. Pending.
Bayshore Sanitation Co., Inc., 16,386	Application to operate a sanitary sewage disposal system in Jefferson County is dismissed. Effective 9/10/68.	Central Iowa Telephone Co., 16,621	See General Telephone Co. of Missouri
Belleau Dardenne Utilities Co., Inc., 16,289	Belleau Dardenne Utilities Co. ordered to make an inventory and original cost appraisal on sewer properties. Pending.	Central Mobilphone, Inc., 16,602	Authority granted John W. Hardy and Byron M. Zalken, d/b/a Central Mobilphone Service to sell and Central Mobilphone, Inc. to buy all properties used in providing interconnected radio-land telephone service. Effective 12/17/68.
Belleau Dardenne Utilities Co., Inc., 16,290	Belleau Dardenne Utilities Co. ordered to make an inventory and original cost appraisal on water properties. Pending.		
Belleau Dardenne Utilities Co., Inc., 16,595	See Missouri Cities Water Co.		

Central Mobilphone, Inc., 16,603	Authority granted to Ozarks Radio Co. to sell and Central Mobilphone Inc. to buy all of the properties used by Ozarks Radio Co. in providing interconnected radio-land telephone service Effective 12/17/68.	Crystal Springs Development Co., Inc. 16,755	Authority granted to acquire through eminent domain proceedings sewer line right-of-way. Effective 5/29/69.
Central Mobilphone Service, 16,602	See Central Mobilphone, Inc.	Doniphan Telephone Co., 16,292	Telephone complaint by 54 residents in Naylor area dismissed. Effective 7/8/69.
Certified Telephone Answering & Mobile Telephone Service, 16,768	Application for additional authority to provide supplemental non-interconnected paging service. Pending.	Doniphan Telephone Co., 16,632	Investigation as to whether or not Doniphan Telephone Co. is installing telephone service upon application by prospective customers. Pending.
Cha-Bern Terrace Subdivision, 16,639	The investigation as to whether Cha-Bern Terrace Subdivision in Jefferson County operated a sewer system subject to the Commission's jurisdiction is cancelled and the case dismissed. Effective 4/11/69.	Dunklin Sewer Co., 16,732	Application for authority to operate a sanitary sewage disposal system in Jefferson County. Pending.
Cities Service Gas Co., 16,544	See Missouri Public Service Co.	Ellington Telephone Co., 16,638	Telephone complaint. Pending.
Cities Service Gas Co., 16,655	See Gas Service Co. (The)	Fee Fee Trunk Sewer, Inc., 16,308	Authority granted to operate a sanitary sewage disposal system in St. Louis County. Effective 3/18/69.
Cities Service Gas Co., 16,709	See Gas Service Co. (The)	Fee Fee Trunk Sewer, Inc., 16,364	Ordered to make reports to the Commission for the next three years regarding any sewage backup and information as to its progress in the elimination of the subsoil drainage systems. Effective 12/6/68.
Citizens Gas Co. of Hannibal, 16,538	Ordered to distribute refunds received from Panhandle Eastern Pipe Line Co. to its customers on the basis of the respective volumes of gas purchased during specific period. Effective 7/18/68.	Fee Fee Trunk Sewer, Inc., 16,704	Authority granted to acquire through eminent domain the rights-of-way for construction of a sanitary sewer trunk line in the area near Mason Road and Ridgemoor Forest Trunk Line. Effective 4/30/69.
Citizens Gas Co. of Hannibal 16,757	See Great River Gas Co.	Fee Fee Trunk Sewer, Inc., 16,705	Authority granted to acquire through eminent domain the rights-of-way for construction of a sanitary sewer trunk line to Caravelle Subdivision. Effective 4/29/69.
Citizens Telephone Co., 16,588	Request for authority to file tariffs effecting a rate additive to compensate for the Federal Corporate Income Surtax is dismissed. Effective 10/9/68.	Fee Fee Trunk Sewer, Inc., 16,708	Authority granted to acquire through eminent domain the rights-of-way for construction of a sanitary sewer trunk line to serve properties south of Highway 40 and High Prairie Subdivision. Effective 4/30/69.
Citizens Telephone Co., 16,629	Authority granted to Citizens Telephone Co. to construct an addition to its existing toll facilities to provide toll service from Alma to Higginsville. Effective 12/19/68.	Fenton Development Co., 16,361	Found not to be operating a sewer system in Briar Cliff Estates, Jefferson County, subject to the Commission's jurisdiction. Effective 8/20/68.
Cliff Cave Sewer Co., 16,682	Application for authority to operate a sewage disposal system in St. Louis County. Pending.	Fenton Sewer Co., 16,409	Application to continue to operate and maintain a sanitary sewage disposal plant in St. Louis County. Pending.
Commercial Pipeline Co., Inc., 16,671	See Rich Hill-Hume Gas Co., Inc.	Fenton Sewer Co., 16,776	Application to acquire through eminent domain sewer easements to the properties of Maude F. Warner to provide sanitary sewage facilities in the Fenton Creek Watershed. Pending.
Commonwealth Theatres, Inc., 15,960	Telephone complaint against General Telephone Co. of Mo. Dismissed. Effective 7/12/68.	Franklin County Service Co., 16,526	Authority granted to accept the transfer of certain properties from Melody Lake Ranch. Effective 8/2/68.
Continental Telephone Co., 16,777	Application by Continental Telephone Co of North America to acquire more than 10% of the capital stock of Hartville Telephone Co. Pending.	Franklin County Service Co., 16,529	Authority granted to operate a sanitary sewer system in Franklin County. Effective 8/6/68.
Conway-Niangua Telephone Co., 16,574	See Missouri State Telephone Co.	Frontier Property Owners Association, 16,403	Investigation to determine whether or not a sewer system operating in Frontier Estates Subdivision, Jefferson County, is under the Commission's jurisdiction. Pending.
Conway-Niangua Telephone Co., 16,589	See Missouri State Telephone Co.		
Corisande Hills Subdivision, 16,363	Corrisande Hills Subdivision is found not to be operating a sewer system in Jefferson County subject to the Commission's jurisdiction. Effective 2/20/69.		
Creekwood Sewer System, Inc., 16,362	Creekwood Sewer System, Inc. is found not to be operating a sewer system in Jefferson County subject to the Commission's jurisdiction. Effective 8/6/68.		
Crystal Springs Development Co., Inc., 16,058	Authority granted to operate a sewer system and treatment works in St. Charles County. Effective 7/30/68.		

Gas Service Co. (The), 16,146, 16,147, 16,148, 16,172, 16,178, 16,180, 16,190, 16,191, 16,192, 16,194, 16,204, 16,205, 16,217, 16,218, 16,219 & 16,251	Motion to continue in effect conditional certificates of public convenience and necessity in the counties of Camden, Dallas, Greene, Laclede, Phelps, Polk, Pulaski and Webster. Pending.	Gray Summit Water Co., 15,959 and 16,038	General Counsel ordered 7/1/68 to institute legal proceedings to compel company's compliance with state law. Company's certificate of convenience and necessity revoked 1/30/69. General Counsel directed 6/25/69 to file suit to enjoin operation and seek penalties against company.
Gas Service Co. (The), 16,327	Authority granted to provide natural gas service to Osborn and Stewartville. Effective 10/1/68.	Great River Gas Co., 15,976	Order overruling petition to reopen and modify Report and Order which granted authority to Great River Gas Company. Effective 11/7/68.
Gas Service Co. (The), 16,495	Conditional authority granted to operate a gas distribution system in McDonald County. Effective 9/27/68.	Great River Gas Co., 16,757	Authority given to Great River Gas Co. to deliver to Citizens Gas Co. of Hannibal shares of Northern Illinois Gas Co. Citizens Gas Co. of Hannibal authorized to sell all of its assets to Great River Gas Co. Effective 6/30/69.
Gas Service Co. (The), 16,552	Authority granted to operate a natural gas distribution system in Cass County. Effective 8/20/68.	Harmony Hills Water and/or Sewer Co., 16,775	See Jeffco Hills Water and/or Sewer Co.
Gas Service Co. (The), 16,584	Application for authority to provide natural gas service in Marion County. Pending.	Hartville Telephone Co., 16,777	See Continental Telephone Co.
Gas Service Co. (The), 16,653	Application for authority to file tariffs reflecting increased rates for gas service to all classes of customers in the amount of \$4,020,000. Pending.	Henry, Ashley, 16,726	Investigation of the water system at Flemington, Polk County, owned and operated by Ashley Henry was found not to be under the commission's jurisdiction. Effective 6/5/69.
Gas Service Co. (The), 16,655	Authority granted to distribute refunds received from the Cities Service Gas Co. (\$1,881,199.50 to the domestic, small commercial and small industrial customers, \$109,621.46 to the large commercial customers and \$1,614,492.87 to the large industrial customers.) Effective 12/17/68.	Hideaway Water Co., 16,339	Found not to operate a water system subject to the commission's jurisdiction. Dismissed effective 8/6/68.
Gas Service Co. (The), 16,658	See St. Joseph Light & Power Co.	I. H. Utilities, inc., 16,728	Investigation regarding alleged violations of its filed tariff. Pending.
Gas Service Co. (The), 16,693	See Kansas City Power and Light Co.	I. H. Utilities, Inc., 16,763	Investigation of I. H. Utilities, Inc., request to file a revised General Water Service Schedule for its operations in Indian Hills Subdivision, Crawford County. Pending.
Gas Service Co. (The), 16,709	Application to distribute refunds received from its suppliers. (\$96,833.99 from Cities Service Gas Co. and \$1,023.40 from Panhandle Eastern Pipe Line Co.) Pending.	Inter-County Telephone Co., 16,530	Authority granted to borrow additional sum from the U. S. Government (REA) and to discontinue all switcher service in the Union Star area upon the inauguration of dial-operated telephone service. Effective 8/7/68.
General Communications, 16,401	Granted authority to operate an interconnected radio-land telephone service. Effective 7/25/68.	Inter-County Telephone Co., 16,582	See Union Star Exchange of Inter-County Telephone Company.
General Telephone Co. of Iowa, 16,621	See General Telephone Co. of Missouri	Inter-County Telephone Co., 16,771	Application for authority to borrow from the U. S. Government (REA) to provide one-party service exclusively. Pending.
General Telephone Co. of Missouri, 15,350	See Moberly Broadcasting Co.	J & S Communications Co., 16,773	Application for authority to operate an interconnected radio-land telephone service and non-interconnected paging service. Pending.
General Telephone Co. Of Missouri, 15,960	See Commonwealth Theatres, Inc.	Jeffco Hills Water and/or Sewer Co., 16,775	Investigation of Jeffco Hills Water and/or Sewer Co. and Harmony Hills Water and/or Sewer Co. concerning ownership and operation of companies. Pending.
General Telephone Co. of Missouri, 16,621	Authority granted to Central Iowa Telephone Co., General Telephone Co. of Iowa, General Telephone Co. of Nebraska and General Telephone Co. of Missouri to merge with General Telephone Co. of Missouri to be surviving corporation. Effective 11/19/68.	Jefferson County Sewer Co., Inc., 16,270	Granted an interim increase in rates for sewer service amounts filed with the exception that base charge per month be modified. Effective 4/17/69.
General Telephone Co. of Missouri, 16,656	Complaint by CATV of Columbia Inc. regarding the existing Community Antenna Television Tariffs and filing of increased rate tariff for wide spectrum services. Case dismissed 4/22/69.		
General Telephone Co. of Nebraska, 16,621	See General Telephone Co. of Missouri		
Grand River Mutual Telephone Corp., 16,645	Authority granted to borrow an additional sum of \$1,865,000 from the U. S. Government (REA). Effective 12/20/68.		

Joplin Water Works Co., 16,454	Application for authority to establish increased rates and charges for water service in the amount of \$360,000 in the City of Joplin and vicinity. Pending.	Lakeland Telephone Co., 16,615	Authority granted to Southwestern Bell Telephone Co. to sell and Lakeland Telephone Co. to purchase toll equipment pole facilities. Effective 12/20/68.
Kansas City Area Transportation Authority, 16,599	Cases No. 16,539 and 16,599 concerning the application of K. C. Transit, Inc. for authority to sell assets to K. C. Area Transportation Authority were Consolidated on a joint record for hearing, effective 10/2/68. Permission was granted to sell to K. C. Area Transportation Authority all of the physical properties comprising its bus system. Effective 11/7/68.	Lakeside Water Co., Inc., 16,727	Investigation of the adequacy of the water service provided by Lakeside Water Co., Inc. Pending.
Kansas City Power & Light Co., 16,592	Authority granted to K. C. Power & Light Co. with respect to its accounting for accelerated depreciation pursuant to provisions of Section 167(b) of the Internal Revenue Code, as amended, and the Federal income tax results. Effective 9/6/68.	Lakeview Heights Water Service, 16,473	Authority granted to render water service as a public utility in Benton County. Effective 12/3/68.
Kansas City Power & Light Co., 16,593	Authority granted to K. C. Power & Light Co. with respect to its accounting for the tax credit under Section 2 of the Revenue Act of 1962, enacting Section 38 of the Internal Revenue Code of 1954, as amended, for incertain depreciable property. Effective 9/6/68.	Lamplight Square Subdivision, 16,553	Investigation of the sewer at Lamplight Square Subdivision to determine whether it is being operated as a public utility under Commission jurisdiction is discontinued. Effective 12/6/68.
Kansas City Power & Light Co., 16,649	Complaint by Mount Washington Cemetery concerning the relocation of a transmission line. Case dismissed, effective 4/9/69.	Lathrop Telephone Co., 16,634	Authority granted to Leon McDowell to sell and Lathrop Telephone Co. to buy properties in Clinton and Caldwell Counties. Effective 12/27/68.
Kansas City Power & Light Co., 16,693	Authority granted to distribute the sum of \$307,131.06 to certain customers based upon refunds received from the Gas Service Co. Effective 4/8/69.	Lead Belt Water Co., 16,651	Ordered to adjust books. Effective 9/6/68.
Kansas City Power & Light Co., 16,649	Complaint by Mount Washington Cemetery concerning the relocation of a transmission line. Case dismissed, effective 4/9/69.	Lead Belt Water Co., 16,558	Authority granted to eliminate certain areas it was authorized and required to serve. Effective 11/14/68.
Kansas City Power & Light Co., 16,693	Authority granted to distribute the sum of \$307,131.06 to certain customers based upon refunds received from the Gas Service Co. Effective 4/8/69.	Leora Subdivision, 16,554	Investigation of the sewer system at Leora Subdivision to determine whether it was being operated as a public utility under Commission's jurisdiction is discontinued. Effective 12/9/68.
Kansas City Transit, Inc., 16,539	Application for authority to make distributions of its dividends is dismissed. Effective 10/25/68.	"Little Farms", 15,977	Investigation to determine whether or not "Little Farms", Platte County, is a water system under Commission jurisdiction is dismissed. Effective 5/9/69.
Kansas City Transit, Inc., 16,599	See Kansas City Area Transportation Authority	McClure, H. C. and Pat McClure, 14,731	Water service complaint filed by 24 residents of McDonald County against the McClures is dismissed. Found they have no further obligations as a public utility. Effective 8/6/68.
Kar-Imm Service Co., 16,507	Authority granted to operate a sewer system in St. Charles County. Effective 3/4/69.	McDonald Water Co., 16,739	See Noel Water Co., Inc.
Kar-Imm Service Co., 16,508	Authority granted to operate a water system in St. Charles County. Effective 3/4/69.	McDowell, Leon, 16,633	Authority granted to North Missouri Telephone Co., Inc. to sell and Leon McDowell to buy certain telephone exchanges in Clinton and Caldwell Counties. Effective 12/27/68.
Laclede Gas Co., 16,689	Application for authority to increase rates for gas service in St. Louis County and the City of St. Louis in the amount of \$6,870,000. Pending.	McDowell, Leon, 16,634	See Lathrop Telephone Co.
Laclede Gas Co., 16,703	See Union Electric Co.	M & M Water Co., 16,471	Investigation of M & M Water Co. as to whether it is operating a water system subject to Commission jurisdiction. Pending.
Lake Adelle Development Co., 16,460	Investigation to determine whether or not Lake Adelle Development Co. operating Jefferson County is under Commission jurisdiction. Pending.	Madison Development Corp., 16,579	See Capital City Telephone Co.
Lake St. Louis Water Co., 16,106	Authority granted to construct and operate a water system in St. Charles County. Effective 8/13/68.	Madison Telephone Co., 16,573	See Allied Telephone Co.
Lake Wauwanoka, Inc., 16,479	Found to be a public utility providing sewer service in Jefferson County and under Commission jurisdiction. Effective 5/9/69. Order reopening the record adopted 5/23/69.	Madison Development Corp., 16,579	See Capital City Telephone Co.
		Madison Telephone Co., 16,573	See Allied Telephone Co.
		Mark Twain Rural Telephone Co., 16,647	Authority granted to Mark Twain Rural Telephone Company to borrow an additional sum of \$452,000 from the U. S. Government (REA). Effective 1/4/69.

Martigney Creek Sewer Co., 16,410	Application to continue to operate a sanitary sewage disposal system in St. Louis County. Pending.	Missouri Natural Gas Co., 16,774	Application for supplemental authority to extend to the presently certificated area within the limits of the City of Pilot Knob. Pending.
Maxville Sewer System, Inc., 16,464	Application to continue to operate a sanitary sewage disposal system in Jefferson County. Pending.	Missouri Power and Light Co., 16,343	Authorized to distribute natural gas refunds received from Panhandle Eastern Pipe Line Co. Effective 9/6/68.
Missouri Bottoms Sewer Co., 16,326	Authority granted to operate a sanitary sewage disposal system in St. Louis County. Effective 12/20/68.	Missouri Power and Light Co., 16,543	Authority granted to operate a natural gas distribution system in Boone and Audrain Counties. Effective 8/6/68.
Missouri Bottoms Sewer Co., 16,707	Authority granted to acquire through eminent domain proceedings the rights-of-way for construction of a sanitary sewer trunk line to serve Dunnwood Subdivision. Effective 4/30/69.	Missouri Power and Light Co., 16,576	Authority granted to operate an electric substation in Cole County. Effective 11/7/68.
Missouri Central Telephone Co., 16,670	Authority granted to Mo. Central Telephone Co. to file a consolidated tariff to cancel all previous schedules for the company. Effective 4/3/69.	Missouri Power and Light Co., 16,577	Authority granted to operate an electric substation in Adair County. Effective 11/5/68.
Missouri Cities Water Co., 15,692	Inventory and original cost appraisal of water properties in Johnson County. Pending.	Missouri Power and Light Co., 16,643	Authority granted to Mo. Power & Light Co. to purchase and Mo. Utilities Co. to sell certain electrical properties in Cooper County. Effective 2/25/69.
Missouri Cities Water Co., 15,772	See Water & Waste Utility Co.	Missouri Power and Light Co., 16,657	Authority granted to Mo. Power & Light Co. to operate transmission lines and substation in Clinton County. Effective 2/25/69.
Missouri Cities Water Co., 15,946	Inventory and original cost appraisal of water properties in Platte County. Pending.	Missouri Power and Light Co., 16,668	Authority granted to Mo. Power & Light Co. to operate a natural gas distribution and transmission system in Boone, Randolph, Audrain, Ralls, Cooper and Cole Counties. Effective 3/14/69.
Missouri Cities Water Co., 15,826	Inventory and original cost appraisal of Missouri Cities Water Company (St. Charles County Water Company) sewer and water properties in St. Charles County. Pending.	Missouri Power and Light Co., 16,701	Application for authority to refund \$32,225.53 received from Panhandle Eastern Pipe Line Co. Pending.
Missouri Cities Water Co., 16,485	Request for authority to revise its Public Fire Protection rate for its Parkville customers is dismissed. Effective 7/12/68.	Missouri Power and Light Co., 16,772	Application by the City of Hermann for authority to purchase and Mo. Power & Light Co. to sell certain facilities in the City of Hermann. Pending.
Missouri Cities Water Co., 16,513	Authority granted Mo. Cities Water Co. (St. Charles County Water Co.) to continue to operate a sewer system in St. Charles County. Effective 7/8/69.	Missouri Public Service Co., 16,531	Authority granted to operate an electric transmission line in Platte County. Effective 7/11/68.
Missouri Cities Water Co., 16,559	Inventory and cost appraisal of sewer properties in St. Peters Estate and Steeplechase Subdivisions in St. Charles County. Pending.	Missouri Public Service Co., 16,544	Authority granted to refund \$208,108.52 to customers received from Cities Service Gas Co. Effective 7/18/68.
Missouri Cities Water Co., 16,560	Inventory and cost appraisal of sewer properties in Fieldcrest Subdivision, St. Charles County. Pending.	Missouri Public Service Co., 16,569	Request to increase rates for electric service systemwide in the amount of 5.3. million dollars. Pending.
Mo. Cities Water Co., 16,561	Inventory and cost appraisal of sewer properties in Warsen Hills Subdivision, St. Charles County. Pending.	Missouri Public Service Co., 16,594	Authority granted to operate a natural gas distribution system and provide gas service to the inhabitants in and surrounding Leeton. Effective 4/16/69.
Mo. Cities Water Co., 16,595	Authority granted to Mo. Cities Water Co., St. Charles County Water Co. and Belleau Dardenne Utilities Co., Inc. to effect a statutory merger of St. Charles County Water Co. and Belleau Dardenne Utilities Co., Inc. into Mo. Cities Water Co. Effective 11/1/68.	Missouri Public Service Co., 16,683	Electrical complaint. Case dismissed after finding that Commission had no jurisdiction to grant monetary damages. Effective 3/13/69.
Mo. Cities Water Co., 16,665	Authority granted to exercise the right of eminent domain to acquire a right-of-way in connection with the extension of its sewer system in St. Charles County. Effective 12/30/68.	Missouri State Telephone Co., 16,574	Application by Mo. State Telephone Co., Modern Telephone Co., Conway-Niangua Telephone Co. and Noel Telephone Co., Inc. to merge with Mo. State Telephone Co. as the surviving corporation is dismissed. Effective 8/23/68.
Missouri Edison Co., 16,740	See Union Electric Co.		

Missouri State Telephone Co., 16,589	Authority granted to Mo. State Telephone Co., Conway—Niangua Telephone Co. and Noel Telephone Co., Inc. to merge with Mo. State Telephone Co. as the surviving corporation. Effective 11/1/68.	Nodaway Valley Telephone Co., 16,567	Request for authority to file a tariff reflecting a general increase in rates in the amount of \$3,300 for telephone service in its Maitland and Skidmore exchanges. Interim rate granted for an annual revenue increase of \$1,520. Effective 2/14/69.
Missouri State Telephone Co., 16,690	Authority granted to execute and deliver to the U. S. Government (REA) certain promissory notes. Effective 5/14/69.	Noel Telephone Co., Inc., 16,574	See Missouri State Telephone Co.
Missouri Telephone Co., 16,555	Authority granted to Mo. Telephone Co. and Reeds Spring Telephone Co. to merge with Mo. Telephone Co. as the surviving corporation. Effective 11/8/68.	Noel Telephone Co., Inc., 16,589	See Missouri State Telephone Co.
Missouri Telephone Co., 16,662	Application for authority to file tariffs increasing rates in the amount of \$521,500. for telephone service. Pending.	Noel Water Co., Inc., 16,738	Application for authority to render water service in Noel. Pending.
Missouri Utilities Co., 12,673	Request for permission to deliver to Columbia natural gas at the customer's meter inlet at a maximum pressure greater than ten inches. Dismissed 9/27/68.	Noel Water Co., Inc., 16,739	Application for authority to purchase and for McDonald Water Co. to sell certain properties located in McDonald County. Pending.
Missouri Utilities Co., 16,643	See Mo. Power & Light Co.	North Missouri Telephone Co., 16,633	See McDowell, Leon
Missouri Utilities Co., 16,696	Application for authority to increase rates in the amount of \$78,800 for water service in Cape Girardeau. Pending.	Northern Illinois Gas Co., 16,757	See Great River Gas Co.
Missouri Utilities Co., 16,697	Application for authority to increase rates in the amount of \$135,000 for gas service in Scott, Stoddard and Cape Girardeau Counties. Pending.	Northern Natural Gas Co., 16,354, 16,378 and 16,712	See Peoples Natural Gas Division
Missouri Utilities Co., 16,722	Application for authority to operate an electric transmission line from Jackson to a new sub-station on Mt. Auburn Road in Cape Girardeau. Pending.	Northwest Missouri Gas Co., 16,713	Application for authority to sell and distribute natural gas in Buchanan, Clinton, DeKalb, Daviess and Caldwell Counties. Pending.
Moberly Broadcasting Co., 15,350	Telephone complaint by Moberly Broadcasting Company against General Telephone Company and Southwestern Bell Telephone Company. Dismissed 3/11/69.	Osage Natural Gas Co., 16,503	Granted authority to operate the gas distribution systems in Naylor and Neelyville area. Effective 10/22/68.
Moberly Broadcasting Co., 15,351	Telephone complaint by Moberly Broadcasting against Western Light & Telephone Company and Southwestern Bell Telephone Company. Dismissed 4/21/69.	Osage Natural Gas Co., 16,556	Authority granted to operate a gas distribution system in the City of Quilin and surrounding area. Effective 11/4/68.
Mobile Radio Communications Co., 15,182	Supplemental Application for additional non-interconnected paging service. Pending.	Ozarks Radio Company, 15,447	Application for authority to provide supplemental non-interconnected paging service. Pending.
Mobilphone Service, 15,975	Application for authority to provide supplemental non-interconnected paging service. Pending.	Ozarks Radio Company, 16,603	See Central Mobilphone, Inc.
Modern Telephone Co., 16,574	See Missouri State Telephone Co.	Panhandle Eastern Pipe Line Co., 16,343	See Missouri Power & Light Co.
Modern Telephone Co., 16,716	Application for authority to file tariffs reflecting the addition of rates for four-party business and residential service outside the initial rate area in its Caulfield and Theodosia exchanges. Case dismissed 5/28/69.	Panhandle Eastern Pipe Line Co., 16,701	See Missouri Power & Light Co.
Myrtle Telephone Co., 16,699	Complaint regarding the installation of a phone. Pending.	Panhandle Eastern Pipe Line Co., 16,709	See Gas Service Co. (The)
		Peaceful Valley Lake Corp., 16,511	Granted authority to operate a water system in Gasconade County. Effective 3/4/69.
		Peaceful Valley Lake Corp., 16,750	Application for authority to provide water service to Peaceful Valley Lake Estates in Gasconade County. Pending.
		Peoples Natural Gas Division (Northern Natural Gas Co.), 16,354	Granted conditional authority to operate a gas distribution system in Pacific. Effective 6/17/69.
		Peoples Natural Gas Division (Northern Natural Gas Co.), 16,378	Application to provide Natural gas service to St. Louis County. Pending.
		Peoples Natural Gas Division (Northern Natural Gas Co.), 16,712	Application for authority to provide natural gas service to Times Beach. Pending.
		Peruque Sewer Co., 16,107	Granted authority to operate a sewer system in St. Charles County. Effective 8/13/68.

Physicians and Businessmens Mobile Service, 16,397	Authority granted George A. Stroot, d/b/a Physicians & Businessmens Mobile Service to sell and Eugene D. and Mary J. Desaulniers, d/b/a Physicians & Businessmens Mobile Service to buy all of the properties used to provide interconnected radio-land telephone service. Effective 9/24/68. Application filed 6/20/69 for supplemental authority in providing interconnected radio-land telephone service. Pending.	St. Louis County Water Co., 16,566	Application by St. Louis County for a review and, if necessary, revision of St. Louis County Water Co. rules for the extension of water service. Pending.
Pruitt, Edward L., 16,498	Edward L. Pruitt operating in Lake Annette is found not to be operating a water system in Freemon subject to Commission jurisdiction. Effective 1/3/69.	St. Peters Sewer Co., 15,660	Inventory and original cost appraisal of St. Peters Sewer Co. properties in St. Charles County dismissed. Effective 7/9/68.
Raytown Water Company, 15,558	Application for authority to serve the City of Raytown is dismissed. Effective 7/11/68.	St. Thomas Dial, Inc., 16,579	See Capital City Telephone Company
Reeds Spring Telephone Co., 16,555	See Missouri Telephone Co.	Sho-Me Power Corp., 16,103	Modified company's authority to operate an electric transmission line in Douglas, Howell, Ozark, Reynolds, Shannon and Texas Counties. Effective 11/8/69.
Rich Hill-Hume Gas Co., Inc., 16,671	Authority Granted Rich Hill-Hume Gas Co., Inc. to sell and Commercial Pipeline, Co., Inc. to purchase certain utility properties located in Bates County. Effective 3/13/69.	Sho-Me Power Corp., 16,756	Application for authority to operate an electric transmission line in Webster County. Pending.
Roy-L Utilities, Inc., 16,379	Authorized to operate a water system in Montgomery County. Effective 9/6/68.	Southern Telephone Company, 16,522	Application for authority to establish increased rates for service in all exchanges dismissed. Effective 5/20/69.
Roy-L Utilities, Inc., 16,380	Authorized to operate a sewer system in Montgomery County. Effective 9/6/68.	Southwestern Bell Telephone Co., 14,831	Telephone complaint. Order transferred certain toll stations from Jefferson City to Linn. Effective 4/29/69.
St. Charles County Utilities Co., Inc., 16,357	Authority granted to operate a sewer system in St. Charles County. Effective 10/18/68.	Southwestern Bell Telephone Co., 15,350	See Moberly Broadcasting Co.
St. Charles County Utilities Co., Inc., 16,637	Authority granted to operate a sanitary sewage service in St. Charles County. Effective date pending.	Southwestern Bell Telephone Co., 15,351	See Moberly Broadcasting Co.
St. Charles County Water Co., 15,772, 15,826, 16,513 and 16,595	See Missouri Cities Water Company	Southwestern Bell Telephone Co., 16,421	See Urbana Telephone Co.
St. Joseph Light and Power Co., 16,546	Application for permission to establish increased rates for water service in Tarkio is dismissed. Effective 8/8/68.	Southwestern Bell Telephone Co., 16,598	See Capital City Telephone Co.
St. Joseph Light and Power Co., 16,658	Authority granted to distribute gas refund received from the Gas Service Co. Effective 11/26/68.	Southwestern Bell Telephone Co., 16,615	See Lakeland Telephone Co.
St. Joseph Light and Power Co., 16,734	Authority granted to operate an electric transmission line in Atchison County. Effective 6/12/69.	Southwestern Bell Telephone Co., 16,620	Complaint regarding private branch exchange service is dismissed. Effective 7/22/69.
St. Joseph Water Company, 16,453	Application for authority to establish increased rates and charges for water service in the City of St. Joseph and vicinity. Pending.	Southwestern Bell Telephone Co., 16,642	Application for permission to establish new intrastate rates in the amount of \$44,500 applicable to telecommunication services. Pending.
St. Louis County Sewer Co., 16,408	Authority granted to operate a sewer system in St. Louis County. Effective 4/29/69.	Southwestern Bell Telephone Co., 16,766	See Capital City Telephone Co.
St. Louis County Sewer Co., 16,525	Investigation of the adequacy of sewer service. Pending.	Spanish Lake Service, Inc., 16,412	Authority granted to operate a sewer system in St. Louis County. Effective 2/27/69.
St. Louis County Water Co., 15,102	Authority granted to relocate service lines. Effective 7/24/68.	Spanish Lake Service, Inc., 16,446	Ordered to continue infiltration study, investigations to locate cross-connections of storm and sanitary sewers, regular sewer line inspections and quarterly written reports after complaints filed by various customers. Effective 10/28/68.
St. Louis County Water Co., 16,563	Application for authority to file tariffs reflecting increased rates for water service in the amount of \$3,583,000. \$2,604,375 approved. Effective 6/1/69.	Spanish Lake Service, Inc., 16,591	Authority granted to sell or transfer certain parts of sanitary sewer facilities located within and partly without the Metropolitan St. Louis Sewer District. Effective 11/13/68.
		Stevens Realty Co., 15,805	Order for Inventory and original cost appraisal of Stevens Realty Co. sewer properties in St. Charles County, is dismissed. Effective 7/16/68.
		Stover Telephone Co., 16,572	See Allied Telephone Co.
		Sunrise Lake, 16,480	Investigation as to whether or not Sunrise Lake water system, Jefferson County, is being operated as a public utility under Commission jurisdiction. Pending.

Terra Realty and Investment Co., Inc., 16,122	Authority granted to operate a sanitary sewage disposal system in Jefferson County. Effective 8/13/68.	Union Electric Company, 16,740	Authority granted to Mo. Edison Co. to sell and Union Electric Co. to purchase shares of common stock. Effective 4/28/69.
Theodosia Hills Development Association, Inc., 16,458	Investigation as to whether or not Theodosia Hills Development Association, Inc., Ozark County, is a public utility operating a water system under Commission jurisdiction. Pending.	Union Star Exchange of Inter-County Telephone Co., 16,582	Investigation of the rates charged by the Union Star Exchange of Inter-County Telephone Co. Pending.
Triangle Telephone Co., 16,565	See Allied Telephone Co.	United Telephone Company, 16,766	See Capital Telephone Company
Twillman Construction Co., 15,772	See Water & Waste Utility Co.	Urbana Telephone Company, 16,421	Urbana Telephone Co. (Mo. State Telephone Co.) authorized to purchase properties from Southwestern Bell Telephone Co. Effective 9/5/68.
Twillman Utilities Co., 15,772	See Water & Waste Utility Co.	Utility Consultants, Inc., 16,093	Application for authority to operate an intra-state water system dismissed. Effective 11/14/68.
Twillman, Wilbert W., 15,772	See Water & Waste Utility Co.	Valley Sewage Co., 16,411	Application to continue to operate a sanitary sewage disposal plant in St. Louis County. Pending.
Union Electric Company, 16,524	Authority granted to construct and maintain a transmission line in Randolph, Macon and Adair Counties. Effective 9/6/68.	Verona Telephone Company, 16,557	Authority granted to borrow \$254,000 from the U. S. Government (REA). Effective 11/7/68.
Union Electric Company, 16,532	Authority granted to operate an electric transmission line in Montgomery, Warren, St. Charles and Franklin Counties. Effective 8/30/68.	Ware Lake, 16,481	Investigation to determine whether or not Ware Lake water system operating in Jefferson County is under Commission jurisdiction. Pending.
Union Electric Company, 16,564	Complaint involving rules for under ground service extension and discrimination of regulations against Union Electric Company (Complaint signed by Home Builders Association of Greater St. Louis, and R. A. Vorhof Construction Company; Vorhof-Duenke Company; Givens & Rowles, Inc.; The Alfred H. Mayer Company; Brookdale Development Company; Contemporary Homes, Inc.; Forest Ridge Construction Company; and Spartan Builders, Inc.). Consolidated with Case Number 16,584. Pending.	Warsen Hills Sewer Co., 15,796	Order for original cost appraisal of sewer properties located in St. Charles County is dismissed. Effective 7/16/68.
Union Electric Company, 16,581	Authority granted to operate a transmission line in Cape Girardeau County. Effective 10/15/68.	Water & Waste Utility Co., 15,772	Order for original cost appraisal of water and sewer properties located in St. Charles County is dismissed. (St. Charles County Water Co.) Effective 6/27/69.
Union Electric Company, 16,584	See Union Electric Co., 16,564	Water & Waste Utility Co., 16,762	Application for authority to file an entire schedule of rates governing the provision of sewer service in St. Charles County. Pending.
Union Electric Company, 16,611	Authority granted to operate an electric transmission line in Bollinger, Cape Girardeau and Scott Counties. Effective 10/15/68.	Werges Subdivision, 16,483	The sewer system operating in Montgomery County known as Werges Subdivision is found not to be subject to Commission jurisdiction. Effective 9/13/68.
Union Electric Company, 16,654	Application for authority to file tariffs increasing rates for electric service in the amount of \$12,200,000. Pending.	West Elm Place Corp., 16,489	Authority granted to continue to operate a sewer system in Jefferson County. Effective 4/22/69.
Union Electric Company, 16,703	Complaint by Union Electric Co. against Laclede Gas Co. Concerning public utility extension in non-residential tracts. Withdrawn 4/10/69.	Western Light & Telephone Co., 15,351	See Moberly Broadcasting Co.
		Western Light & Telephone Co., 15,640	Telephone complaint filed by the City of Willow Springs is dismissed. Effective 5/15/69.
		White Branch Water Service, 16,267	Authority granted to operate a water system in Benton County. Effective 4/16/69.